



a Geberit company

2100 South Clearwater Drive
Des Plaines, IL 60018
Phone: 847-803-5000
Fax: 847-803-5454
www.chicagofaucets.com

FOR TECHNICAL ASSISTANCE
1-800-TEC-TRUE (1-800-832-8783)

REPAIR PARTS

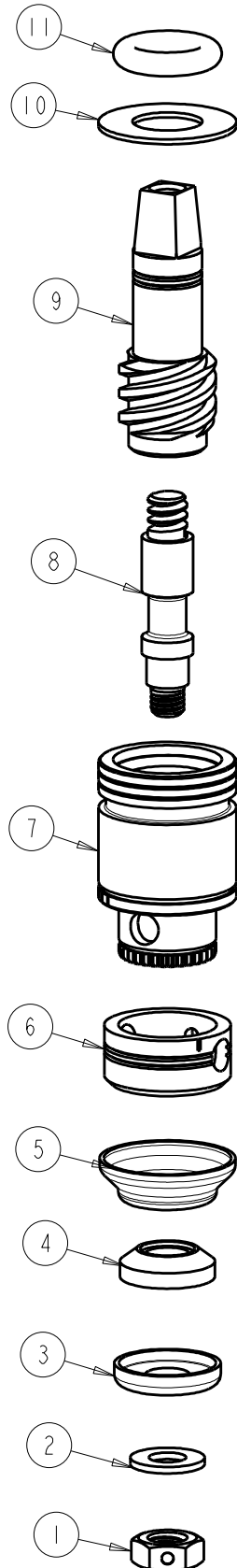
BY: SID DATE: 01-16-18
CHK: *GR* REV:

FITTING NO.

1-099-245JKABNF

SUBMITTED MODEL NO.

ITEM NO.



| ITEM | PART NO. | DESCRIPTION |
|------|---------------|------------------------------------|
| 1 | 333-097JKABNF | NUT |
| 2 | 1-031JKABNF | WASHER, STEM |
| 3 | 1-022JKABNF | WASHER, RETAINER |
| 4 | 1-021JKABNF | WASHER, SEAT |
| 5 | 1-027JKABNF | SEAT |
| 6 | ----- | SLEEVE |
| 7 | 2-229JKABRBF | SLEEVE |
| 8 | ----- | STEM, LOWER UNIT |
| 9 | ----- | STEM, RH UNIT |
| 10 | 93-031JKABRBF | BRASS WASHER .675 O.D. X .411 I.D. |
| 11 | 1-519JKABNF | O-RING, .359 X .139 |