

**CHICAGO
FAUCETS**

a Geberit company

FOR TECHNICAL ASSISTANCE
1-800-TEC-TRUE (1-800-832-8783)

2100 South Clearwater Drive
Des Plaines, IL 60018
Phone: 847-803-5000
Fax: 847-803-5454
www.chicagofaucets.com

**REPAIR
PARTS**

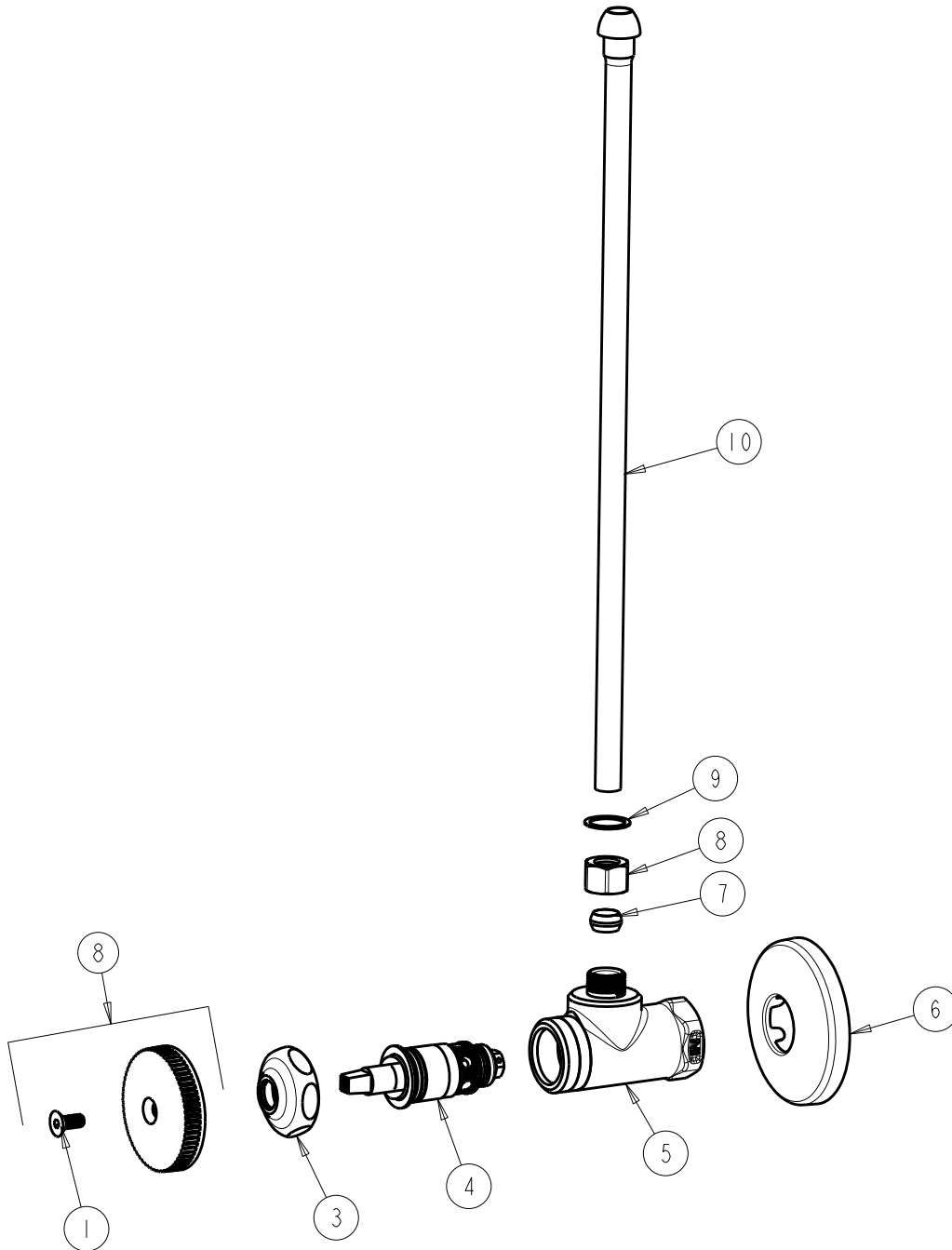
BY: JAR DATE: 10-13-11
CHK: *FCG* REV: 07-01-22

FITTING NO.

1019-ABCP

SUBMITTED MODEL NO.

ITEM NO.



ITEM	PART NO.	DESCRIPTION
1	420-020JKNF	SCREW, 1/8 FLAT HEX HEAD X 1/2
2	318-JKCP	PLAIN WHEEL HANDLE & SCREW
3	1-214JKCP	CAP
4	217-XTLHJKABNF	CARTRIDGE, SLO-COMPRESSION (LH)
5	-----	VALVE BODY (NOT SOLD SEPARATELY)
6	749-016JKCP	FLANGE
7	-----	FERRULE, 3/8 TUBE
8	-----	COMPRESSION NUT, 3/8 TUBE
9	250-027JKRBF	BRASS WASHER
10	-----	3/8 COMP BULLNOSE RISER 12"