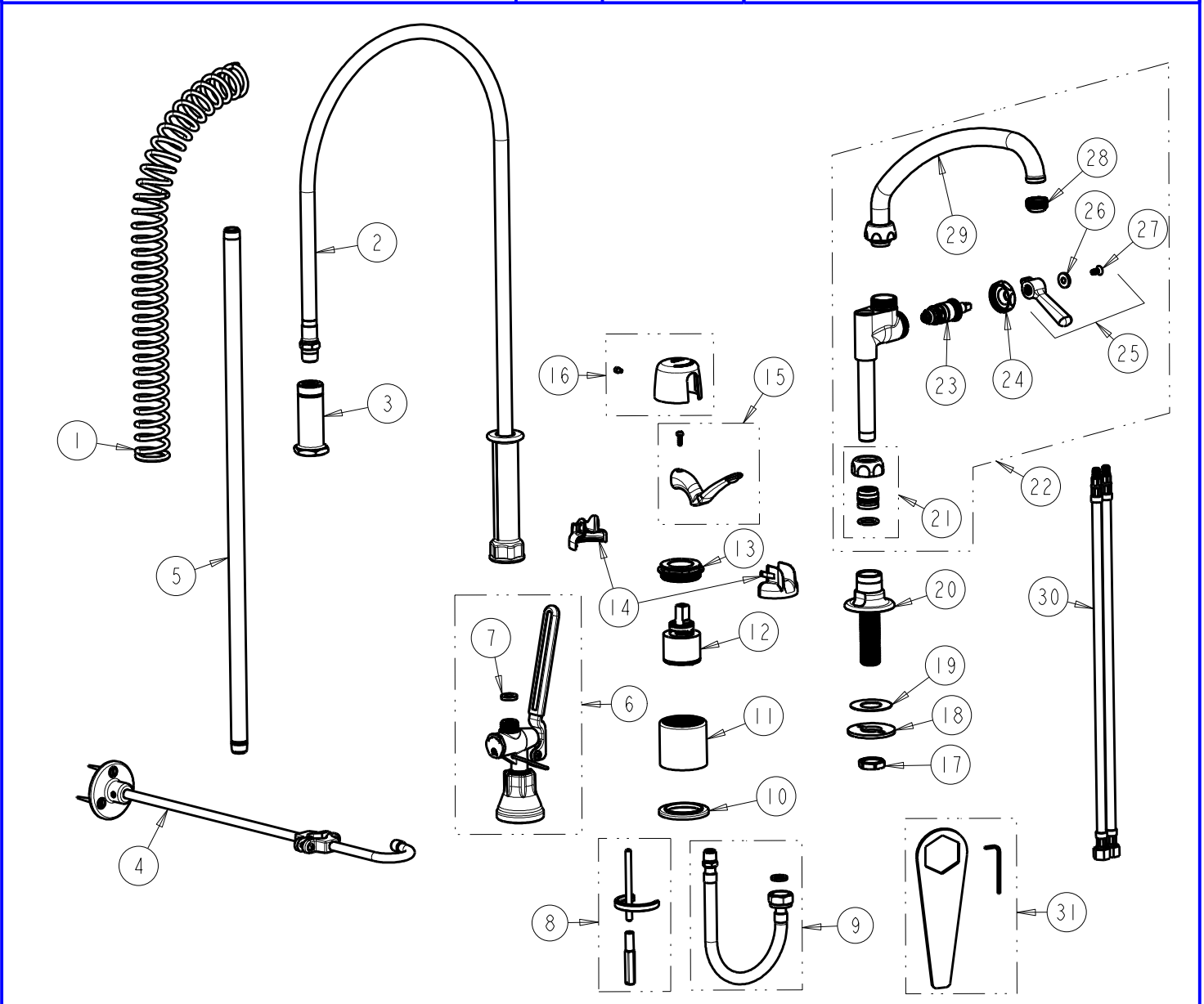


FOR TECHNICAL ASSISTANCE
1-800-TEC-TRUE (1-800-832-8783)



ITEM	PART NO.	DESCRIPTION	ITEM	PART NO.	DESCRIPTION
1	919-014JKCP	SPRING	17	49-004JKRBF	LOCKNUT
2	83-44ABNF	44" HOSE AND HANDLE ASSEMBLY	18	807-112JKNF	WASHER
3	919-038JKABCP	GUIDE SHANK	19	333-103JKNF	RUBBER WASHER
4	902-MHJKCP	PIPE STRAP AND HOOK ASSEMBLY	20	-----	SHANK AND FLANGE ASSEMBLY
5	919-039JKABCP	3/8" NPT X 23" RISER	21	143-PPJKABNF	PRE-PACK
6	90-LABCP	PRE-RINSE VALVE, LOW FLOW	22	613-AABCP	PRE-RINSE ADAPTA FITTING
7	919-243JKABNF	GASKET, .685 X .375 X .125	23	1-099XTJKABNF	QUATURN CARTRIDGE (RH)
8	2200-015KJKNF	HOLDDOWN KIT	24	1-214JKCP	CAP
9	250-006KJKABNF	HOSE WITH FIBER WASHER	25	369-PLJKCP	PLAIN LEVER HANDLE
10	2300-014JKCP	FLANGE, BODY	26	633-223JKNF	INDEX BUTTON (WHITE)
11	-----	BODY (NOT SOLD SEPARATELY)	27	420-020JKNF	SCREW, 1/8 FLAT HEX HEAD X 1/2
12	2300-XJKABNF	40 mm SINGLE LEVER CARTRIDGE	28	E1JKABRCF	OUTLET, QUIXTOP
13	2200-116JKRCF	NUT, HOLDDOWN	29	L9LEQJKAB	SPOUT, 9-1/2 C-C
14	2200-021KJKNF	CARTRIDGE SPIN CAP ASSEMBLY	30	250-025KJKABNF	HOSE, SS BRAIDED 5/16-24 X 3/8
15	2200-225KJKCP	LEVER HANDLE, 2-3/4"	31	2200-002KJKNF	WRENCH & HEX KEY
16	2200-122KJKCP	CAP AND SCREW ASSEMBLY			