

**CHICAGO FAUCETS** 

a Geberit company

2100 South Clearwater Drive  
Des Plaines, IL 60018  
Phone: 847-803-5000  
Fax: 847-803-5454  
www.chicagofaucets.com

# REPAIR PARTS

BY: SID DATE: 08-11-15

CHK: *SR* REV:

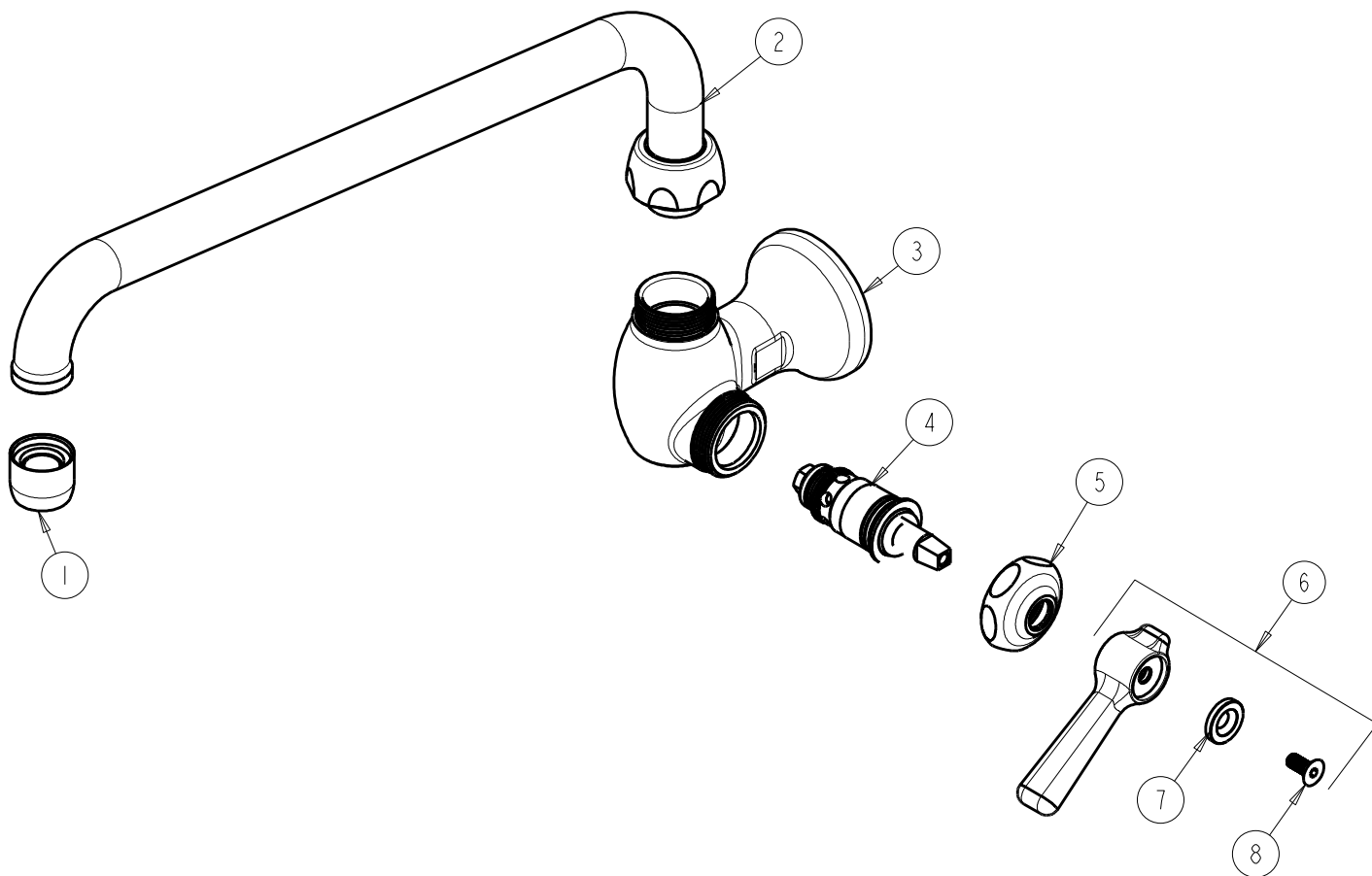
FITTING NO.

**332-L12ABCP**

SUBMITTED MODEL NO.

ITEM NO.

**FOR TECHNICAL ASSISTANCE**  
1-800-TEC-TRUE (1-800-832-8783)



ITEM	PART NO.	DESCRIPTION
1	E3JKABCP	SOFTFLO AERATOR 2.2 GPM
2	L12LEOJKAB	SPOUT, 12" C-C
3	-----	VALVE BODY (NOT SOLD SEPARATELY)
4	1-099XTJKABNF	QUATURN CARTRIDGE (RH)
5	1-214JKCP	CAP
6	369-COLDJKCP	LEVER HANDLE ASSEMBLY
7	633-123JKNF	INDEX BUTTON (BLUE)
8	420-020JKNF	SCREW, 1/8 FLAT HEX HEAD X 1/2