



a Geberit company

2100 South Clearwater Drive  
Des Plaines, IL 60018  
Phone: 847-803-5000  
Fax: 847-803-5454  
www.chicagofaucets.com

**FOR TECHNICAL ASSISTANCE**  
1-800-TEC-TRUE (1-800-832-8783)

# REPAIR PARTS

BY: JAR    DATE: 01-09-13

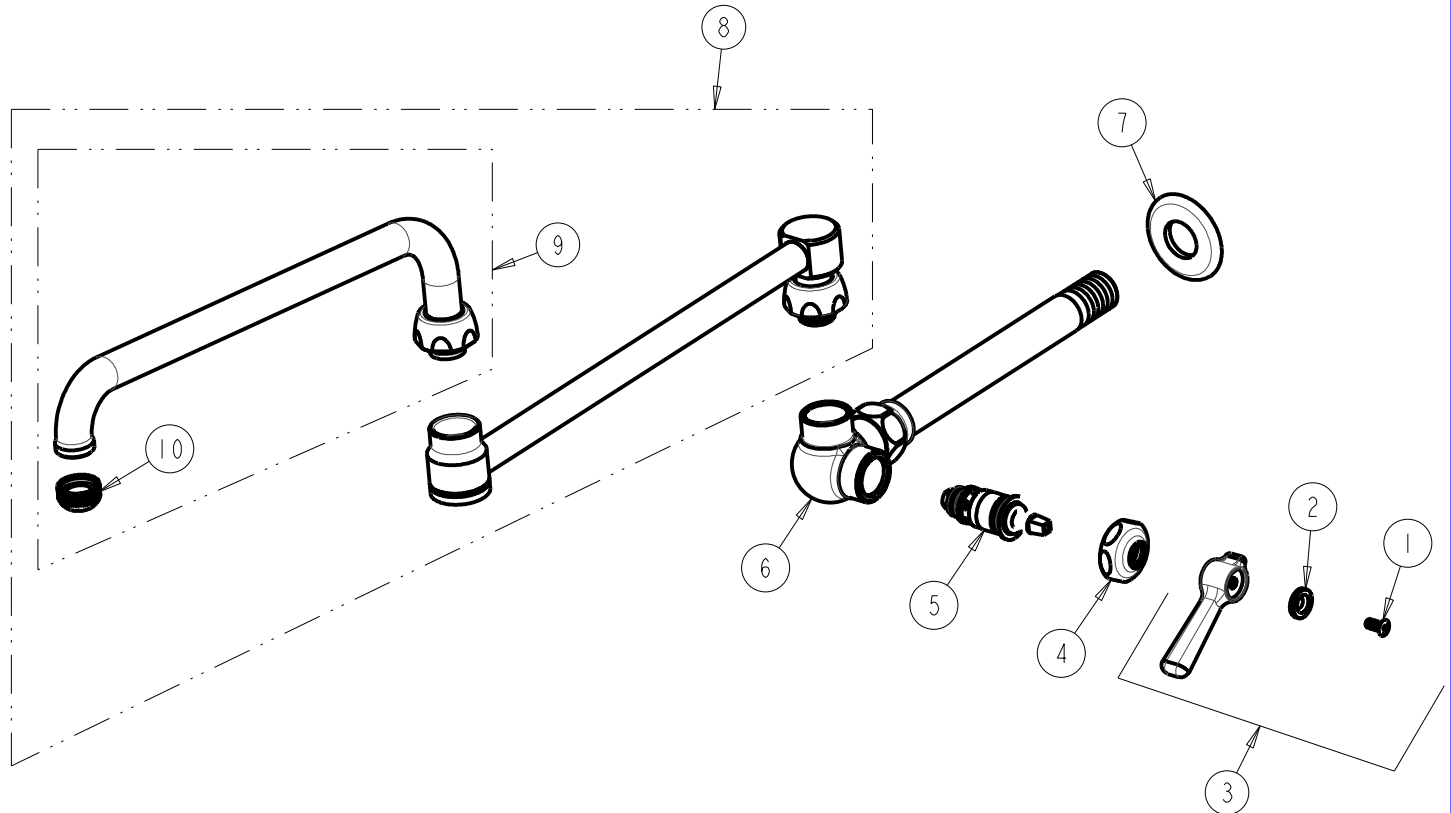
CHK: *JAR*    REV:

FITTING NO.

**334-DJ24ABCP**

SUBMITTED MODEL NO.

ITEM NO.



| ITEM | PART NO.      | DESCRIPTION                   |
|------|---------------|-------------------------------|
| 1    | 420-010JKRCF  | SCREW, 10-32 UNC PH 1/2       |
| 2    | 633-123JKNF   | INDEX BUTTON (BLUE)           |
| 3    | 369-COLDJKCP  | LEVER HANDLE ASSEMBLY         |
| 4    | 1-214JKCP     | CAP                           |
| 5    | 1-099XTJKABNF | QUATURN CARTRIDGE (RH)        |
| 6    | -----         | WALL MNTD WOK FILLER ASSEMBLY |
| 7    | 722-006JKCP   | FLANGE                        |
| 8    | DJ24JKABCP    | SPOUT                         |
| 9    | L12E1JKABCP   | SPOUT                         |
| 10   | E1JKABRCF     | QUIXTOP OUTLET                |