

# CHICAGO FAUCETS.

2100 South Clearwater Drive  
Des Plaines, IL 60018  
Phone: 847-803-5000  
Fax: 847-803-5454  
www.chicagofaucets.com

Geberit Group

**FOR TECHNICAL ASSISTANCE**  
1-800-TEC-TRUE (1-800-832-8783)

## REPAIR PARTS

BY: JAR DATE: 09-21-11

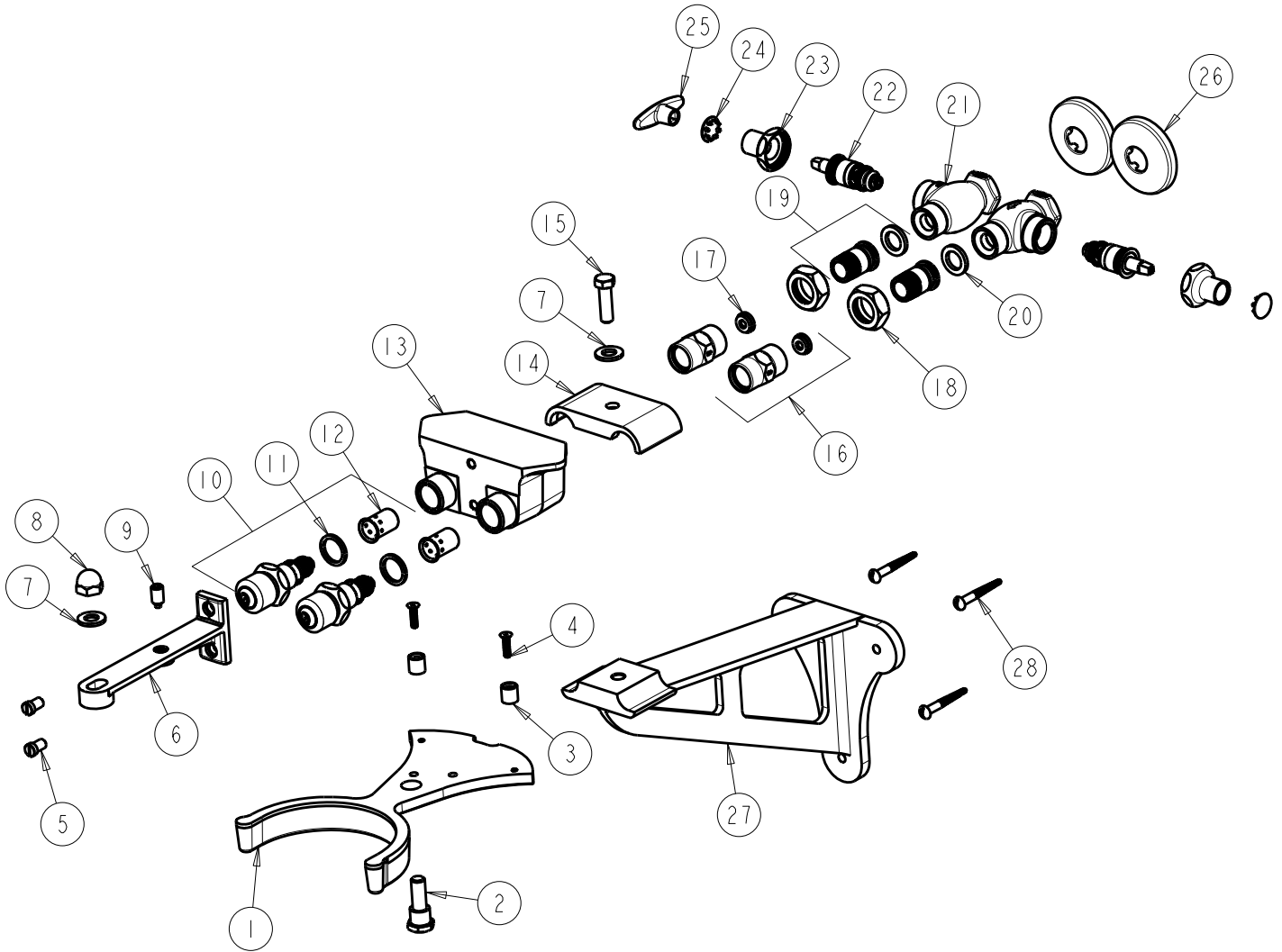
CHK: FHZ REV: 12-04-23

FITTING NO.

745-VOABCP

SUBMITTED MODEL NO.

ITEM NO.



ITEM	PART NO.	DESCRIPTION	ITEM	PART NO.	DESCRIPTION
1	745-023JKCP	LEVER, KNEE FOR 745VO	15	649-006JKNF	SCREW
2	745-003JKCP	BOLT	16	530-012KJKABRCF	ADAPTER
3	745-024JKNF	NYLON CAM STOPPER	17	-----	FLOW REGULATOR, 1.5 GPM MAX
4	420-021JKNF	SCREW, 1/8 FLAT HEX HEAD X 1/2	18	625-045JKCP	NUT
5	625-006JKNF	SCREW, PAN HEAD 5/16-18 UNC	19	625-150KJKABRCF	TAILPIECE w/WASHER
6	745-022JKCP	BRACKET	20	1-011JKABNF	WASHER, .97 X .62 X .12
7	745-105JKNF	STAINLESS STEEL WASHER	21	-----	BODY (NOT SOLD SEPARATELY)
8	745-026JKCP	ACORN NUT	22	217-XTLHJKABNF	CARTRIDGE, SLO-COMPRESSION (LH)
9	745-025JKNF	SCREW	23	1-246JKCP	NUT, CAP LOOSE KEY 1-1/8-18 UNEF
10	745-XJKABNF	FOR PARTS SEE 745-XJKABNF	24	1-144JKCP	BUTTON
11	1-043JKABNF	GASKET, CAP 1 X .80 X .09	25	293-006JKRCF	TEE HANDLE (INCLUDES SCREW)
12	333-073JKABNF	DASHPOT	26	749-016JKCP	FLANGE
13	-----	VALVE BODY NOT SOLD SEPARATELY	27	649-003JKNF	BRACKET (WALL)
14	649-005JKNF	BRACKET (CLAMP)	28	649-004JKNF	SCREW