

CHICAGO FAUCETS.

2100 South Clearwater Drive
Des Plaines, IL 60018
Phone: 847-803-5000
Fax: 847-803-5454
www.chicagofaucets.com

Geberit Group

FOR TECHNICAL ASSISTANCE
1-800-TEC-TRUE (1-800-832-8783)

REPAIR PARTS

BY: JAR DATE: 02-10-06

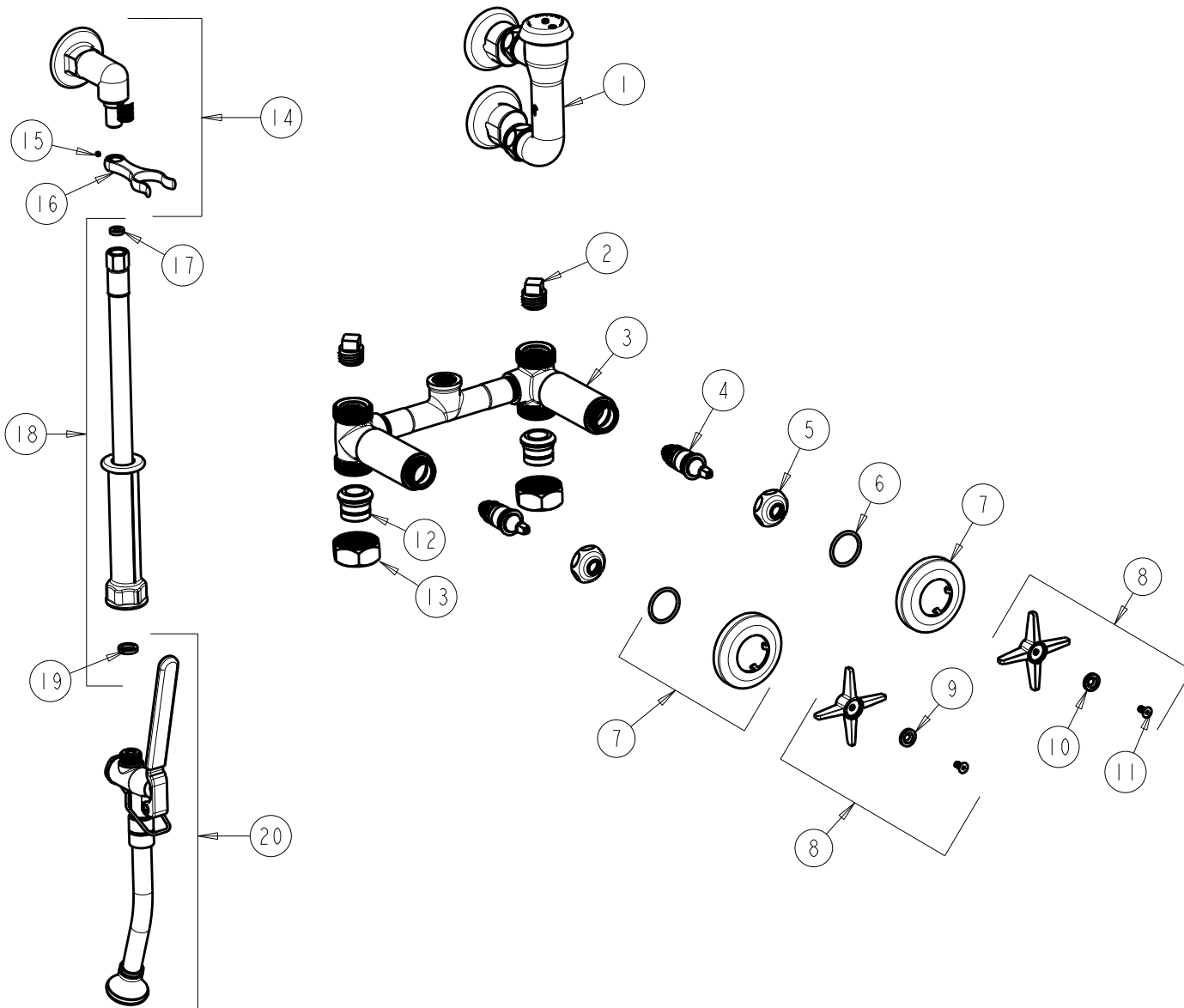
CHK: FHZ REV: 01-20-23

FITTING NO.

778-VBG777-21KCP

SUBMITTED MODEL NO.

ITEM NO.



ITEM	PART NO.	DESCRIPTION	ITEM	PART NO.	DESCRIPTION
1	892-GABCP	ELEVATED VACUUM BREAKER ASSY.	11	420-020JKNF	SCREW, 1/8 FLAT HEX HEAD X 1/2
2	234-032JKABRCF	1/2 NPT PLUG	12	177-003JKABRBF	UNION TAILPIECE
3	-----	VALVE BODY	13	177-002JKCP	UNION NUT
4	217-XTLHJKABNF	CARTRIDGE, SLO-COMPRESSION (LH)	14	777-033KJKABCP	ANGLE SHANK ASSEMBLY
5	1-214JKCP	CAP	15	777-013JKNF	SCREW, SET 6-32 X 1/8
6	5235-107JKNF	O-RING	16	-----	FORK (NOT SOLD SEPARATELY)
7	633-201JKCP	FLANGE & O-RING	17	739-051JKABNF	GASKET, 1/2 X 1/4 X 1/8
8	633-PRJKCP	4-ARM HANDLE ASSEMBLY	18	739-053KJKABNF	HOSE, WHITE VINYL 53" W/ WASHERS
9	633-023JKNF	INDEX BUTTON (RED)	19	200-010JKABNF	GASKET
10	633-123JKNF	INDEX BUTTON (BLUE)	20	777-021KJKCP	SPRAY NOZZLE