

**CHICAGO FAUCETS**  
a Geberit company

2100 South Clearwater Drive  
Des Plaines, IL 60018  
Phone: 847-803-5000  
Fax: 847-803-5454  
www.chicagofaucets.com

**REPAIR PARTS**

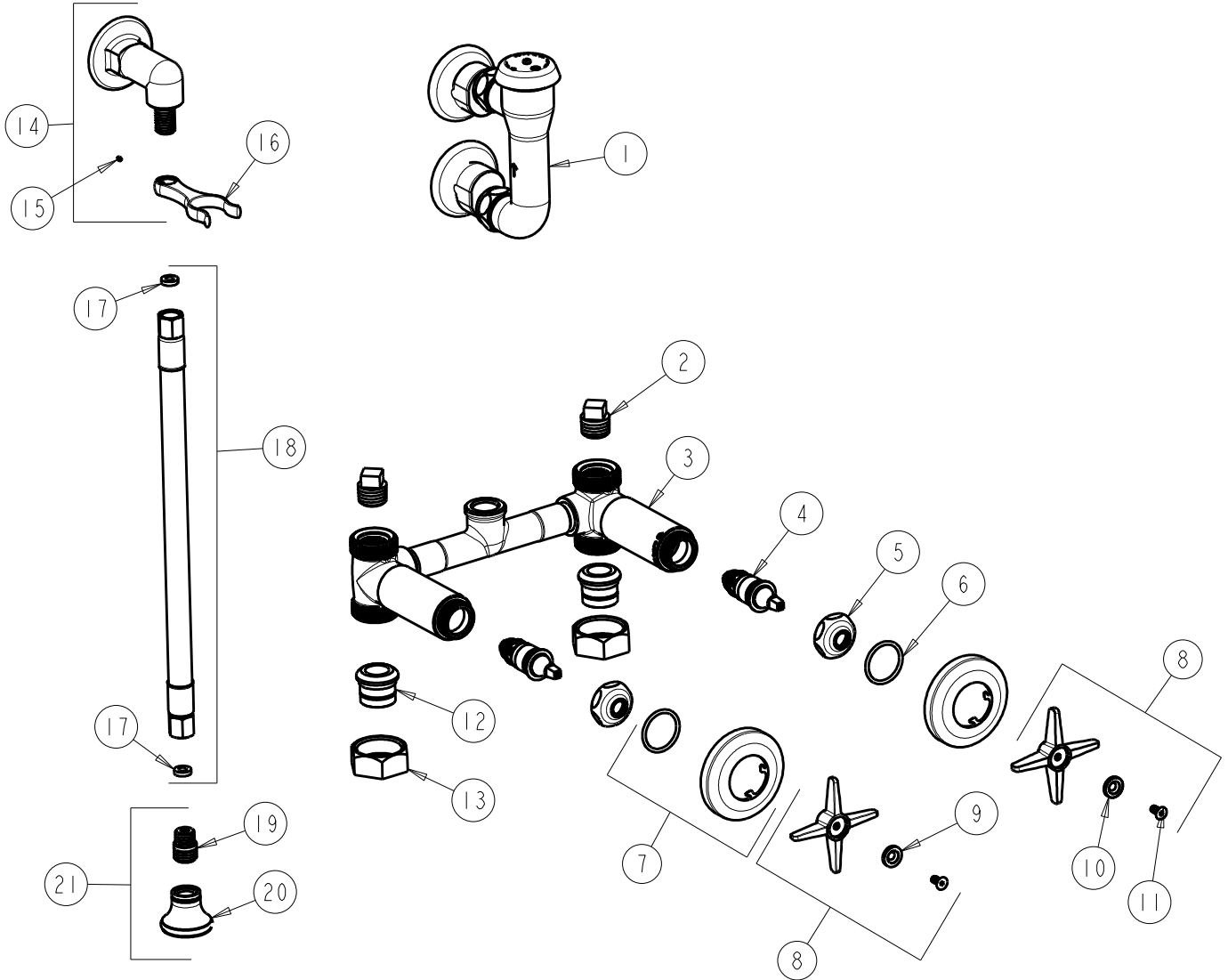
BY: SID DATE: 03-12-02  
CHK: *AK* REV: 12-01-16

FITTING NO.  
**778-VBGCP**

SUBMITTED MODEL NO.

ITEM NO.

**FOR TECHNICAL ASSISTANCE**  
1-800-TEC-TRUE (1-800-832-8783)



ITEM	PART NO.	DESCRIPTION	ITEM	PART NO.	DESCRIPTION
1	892-GABCP	ELEVATED VACUUM BREAKER ASSY.	12	177-003JKABRBF	UNION TAILPIECE
2	234-032JKABRCF	1/2 NPT PLUG	13	177-002JKCP	UNION NUT
3	-----	VALVE BODY	14	777-033KJKABCP	ANGLE SHANK ASSEMBLY
4	217-XTLHJKABNF	CARTRIDGE, SLO-COMPRESSION (LH)	15	777-013JKNF	SCREW, SET 6-32 X 1/8
5	1-214JKCP	CAP	16	-----	FORK (NOT SOLD SEPARATELY)
6	5235-107JKNF	O-RING	17	739-051JKABNF	GASKET, 1/2 X 1/4 X 1/8
7	633-201JKCP	FLANGE & O-RING	18	739-048KJKABNF	4' WHITE VINYL HOSE ASSEMBLY
8	633-PRJKCP	4-ARM HANDLE ASSEMBLY	19	777-011JKABRCF	ADAPTER
9	633-023JKNF	INDEX BUTTON (RED)	20	224-012KJKABCP	ROSE SPRAY OUTLET
10	633-123JKNF	INDEX BUTTON (BLUE)	21	E21JKABCP	ROSE SPRAY ASSEMBLY
11	420-020JKNF	SCREW, 1/8 FLAT HEX HEAD X 1/2			