

**CHICAGO
FAUCETS®**
Geberit Group



Patient Safety | Solutions



Maximizing Your Water System For Improved Patient Safety.



The Right Water System Can Reduce Patient Risk In Three Critical Areas

Patient safety continues to be a vital component in delivering effective health services. It is often complicated by the complexity and size of the health care facility. The plumbing system is an essential part of any healthcare facility and, if designed correctly, can help improve patient safety in three critical areas:

Preventing Hospital Acquired Infections

The right products can help control the spread of HAI's by supporting handwashing policies, reducing surface contact, and providing ways to limit bacteria growth in the water system.

Increasing Scald Protection

To prevent legionella, hospitals must maintain a correct water temperature for stored hot water and perform system infection control activities, including a high temperature thermal flush. Products installed at the point-of-use can help reduce the scald risk to patients.

Reducing Suicide Risk

Over 70% of inpatient suicides* were the result of hanging. Ligature resistant patient room design, especially in psychiatric wards, should include all point-of-use plumbing products.



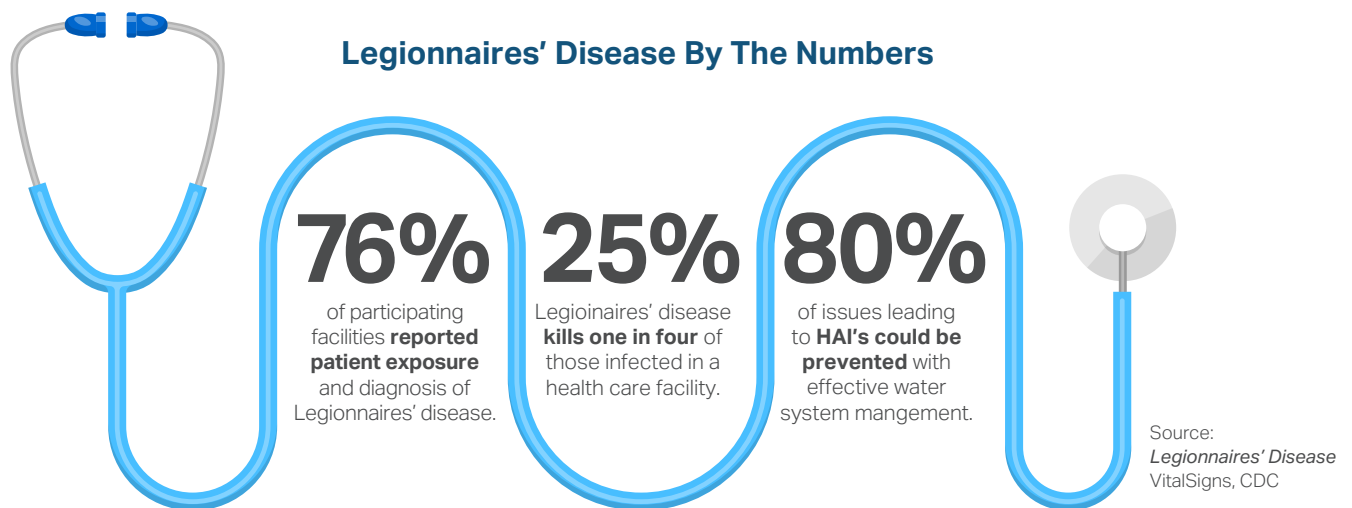
*Incidence and Method of Suicide in Hospitals in the United States, The Joint Commission Journal on Quality and Patient Safety, 2018

Hospital Acquired Infections

The ongoing battle against bacteria in hospitals.

When it comes to the subject of hospital acquired infections, your water and the design of your plumbing products play essential and complicated roles.

Hospitals are particularly at risk for waterborne pathogens – especially Legionnaires' Disease. According to the CDC, **Legionella accounted for 57% of all infection outbreak cases and 85% of deaths from acquired infections.**

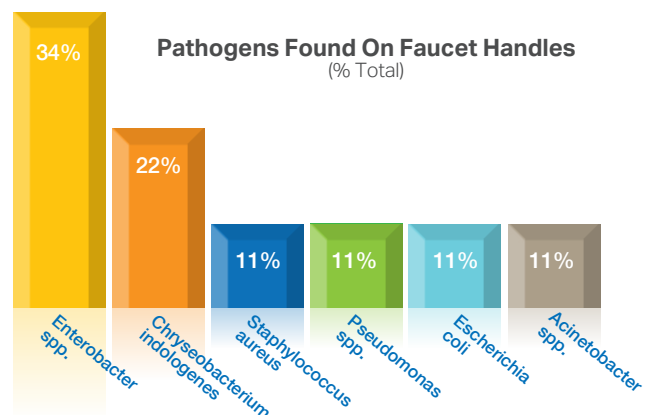


Surface Contamination

Handwashing and touching faucet handles.

Contact with surfaces contaminated with pathogens can lead to the spread of infection. The CDC ranks handwashing as the number one method to combat this issue. However, as this chart illustrates, **touching faucet handles can often re-contaminate clean hands.**

While touchless faucets can eliminate handle contact, studies have shown that some may elevate waterborne bacteria. Most individuals are not at risk for infection by these bacteria, but any increase is reason for concern.



Faucet handle study conducted at a hospital in Pittsburg and analyzed and compiled at SPL (Special Pathogens Lab).

HyTronic® Patient Care

Tested and validated by a nationally-recognized testing laboratory.

HyTronic for Patient Care were extensively tested for both heterotrophic plate count (HPC) and Legionella by the test facilities at the University of Pittsburgh, with sample analysis performed by Special Pathogens Laboratory – a nationally-recognized laboratory that specializes in the detection, control, and remediation of waterborne pathogens. Options like point-of-use scald protection and special operating modes provide additional safeguards to help you keep everyone in your building safe.

Limits microbial contamination

Limits the tested microbial contamination to a level statistically similar to standards set by a conventional manual faucet.

Patient-specific operating modes

Easily programmed for scrub, metering, and cleaning modes.

The **CF Connect App** provides a secure and easy way to adjust and maintain the faucet with a smartphone.

- Hygiene Flush eliminates stagnant water from the plumbing system and removes harmful bacteria
- Six field-adjustable modes for metering, water savings, and detection ranges
- Track Usage

Scald protection

Heavy-duty thermostatic mixing valve delivers water at a safe, consistent temperature.

Durable construction

High-quality brass casting with a refined finish for unrivaled durability.

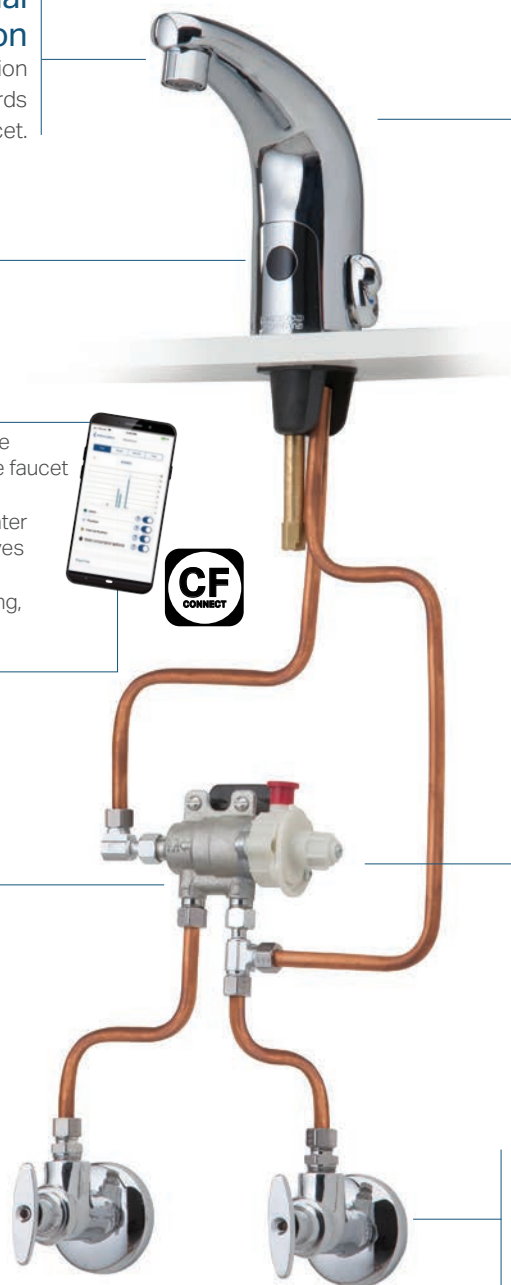
Low-volume solenoid valve helps to **minimize stagnant water in the faucet.**

Flush option for thermal disinfection procedures

Allows waterways and valves to be flushed without the need for a separate bypass line to the faucet.

Prevents cross-flow

Stops with integral checks help prevent bacteria-laden water from flowing back into the plumbing system.





Traditional HyTronic Patient Care

- **Traditional styling** with a higher spout profile for easy of use
- **Versatile** design with options that include side mixer and emergency back-up power supply
- **User-adjustable** temperature control option available



Edge HyTronic Patient Care

- **Heavy-duty** cast brass spout with an angular, contemporary look for the restroom
- **Easy** installation and maintenance with all components located above deck
- **Quick** response with dual-beam design, automatically adjusts to environmental changes



Gooseneck HyTronic Patient Care

- **Accessible** design with gooseneck spout with choice of plain end or laminar outlet
- **Flexible** and easy installation with components located above deck
- **Hygiene** flush mode factory set to eliminate stagnant water from the plumbing system



Complete Control, Completely Hands-Free.

Our pedal and knee valves provide safe, hands-free faucet operation. When combined with a gooseneck spout, this system allows scrubbing from hand to elbow while eliminating the risk of contamination from the faucet surface.

- **Added safety** eliminates contact with the faucet during hand washing.
- **Reliable** performance – NAIAD self-closing cartridge provides immediate shut-off, opens with push.
- **Lead-Free** solid brass construction for durability and safe performance.



Thermostatic/Pressure Balance Shower with Automatic Drain

This system is designed to help reduce the growth of pathogens by removing stagnant water in the shower valve, pipes, and hoses. Drains integrated into the valve and hand spray hose automatically flush water out of the system after each use.

Thermostatic/pressure balancing design

Provides extra protection from scalding and thermal shocks by constantly monitoring both the water temperature and pressure.

Durable construction

Cast brass valve housing is designed for back-to-back and easy 3- or 4-port installations.

Extra safety and convenience

Brass limit helps stop excessive handle rotation. Integral check stops for easy maintenance.

Automatic valve drain

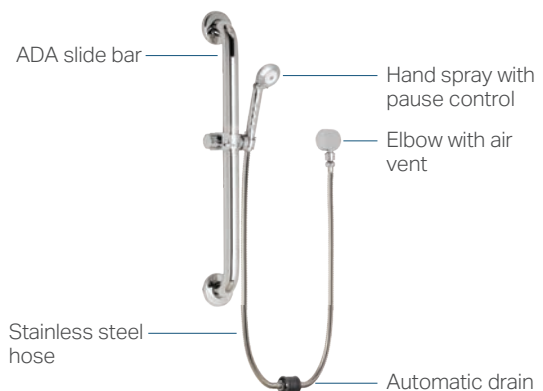
When shower is shut off, water drains automatically from the valve in less than a minute.



Integrated Drain Hand Shower

Use our hand shower with integrated drain to reduce the growth of pathogens by reducing stagnant water throughout the shower system. The drains integrated into the valve and hand spray hose will automatically flush water out of the system after each use.

Add an ADA slide bar for additional shower safety.



1921 Series thermostatic/pressure balancing valve with auto-drain

- **Auto-drain** flushes water out of system after each use
- **Reduces** stagnant water in the shower system piping
- **Advanced** thermal actuator provides protection against changes in pressure and temperature



1920 Series thermostatic/pressure balancing valve with auto-drain

- **Auto-drain** reduces stagnant water in the shower system piping
- **Protection** against changes in both pressure and temperature
- **Traditional** round trim in polished chrome finish



1920 Series thermostatic/pressure balancing valve with auto-drain

- **Auto-drain** reduces stagnant water in the shower system piping
- **Protection** against changes in both pressure and temperature
- **Contemporary** square trim in polished chrome finish



Hand Shower with auto-drain

- **Integrated drain** automatically drains water from the spray and hose after each use
- **Mounting options** include a selection of ADA grab bars or stylish slide bars
- **Water savings** a choice of 2.5 GPM or 1.5 GPM hand sprays with pause control





Products Designed to Deliver Comprehensive Scald protection

Products with TempShield – built-in anti-scald technology – are available exclusively from Chicago Faucets. All were designed and rigorously tested to meet the latest codes for your lavatory and shower projects. Built-in scald protection means quicker installation, lower installation cost, and fewer potential leak points. Plus, there's no chance that an anti-scald device will be left out of the installation.

Make Sure Your Products Meet The ASSE Standards

ASSE 1070 For Faucets

This standard covers devices intended to limit the hot or tempered water temperature supplied to lavatories:

- Valves must be thermostatic and provide scald protection at the rated flow rate of the fixture
- Faucets can have an integrated thermostatic design or water can be tempered using an add-on valve
- The valve must be set to deliver a maximum water temperature of 120°F or less
- For non-adjustable water temperature fixtures the outlet temperature must be 110°F or less

ASSE 1016 For Tubs/Showers

This standard covers tub and shower fixtures that are adjusted and controlled by the user:

- Valves can be pressure-balancing, thermostatic, or combination pressure-balancing/thermostatic
- In-line thermostatic valves may not be utilized to meet this standard
- Valves must provide scald and thermal shock protection for the rated flow rate of the installed shower head
- The valve must limit the maximum setting to 120°F
- The valve must also have a maximum temperature limit stop set prior to occupancy
- The limit stop must be checked and adjusted seasonally to reflect changes in cold water temperature

Chicago Faucets makes it easy to meet codes and stay in compliance at your facility.



An ASSE 1070 Certified Mixing Valve with **Integrated Thermal Flush Option**

The 131-FM Series delivers tempered water in normal use and an integrated thermal flush option for thermal disinfection procedures.

Thermal Disinfection

A simple button that allows waterways and valves to be flushed without the need for a separate bypass line to the faucet.

Tamper Proof

A two-step override procedure with tamper-resistant screw prevents unauthorized personnel from putting the valve into thermal disinfection mode.

Easy Installation

With 3/8" compression connections for standard lines.

Easy Maintenance

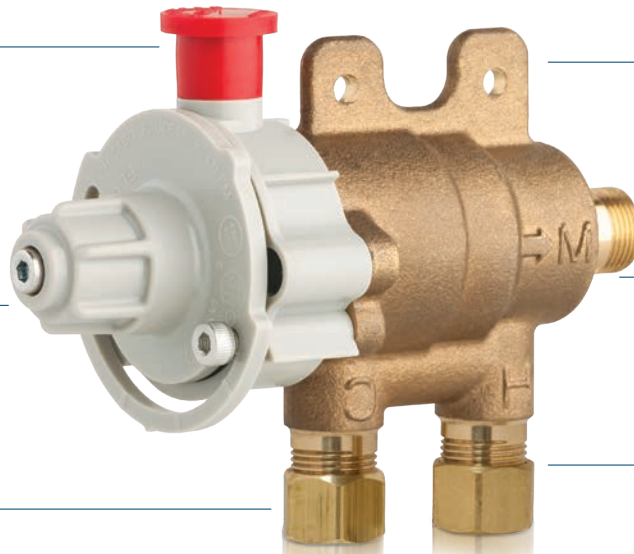
One-piece replaceable cartridge includes an integrated screen filter.

Quality

Heavy-duty, cast brass valve body is backed by an industry leading, lifetime limited warranty.

Reliable Operation

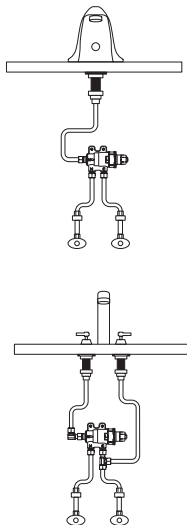
Dual check valves protect against cross-flow.



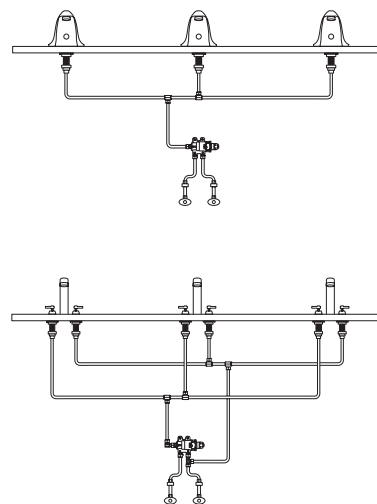
A Versatile and Expandable Solution For Tempered Water

The 131 Series Mixing Valve features a versatile design that allows it to be easily installed with our electronic faucets as well as our manual faucets. With a flow rate of up to 6.6 GPM, it allows you to expand the delivery of tempered water to multiple faucets with just a single 131 Series Valve.

Single or Dual Supply Installations One Faucet



Single or Dual Supply Installations Multiple Faucets



Alpina® Series With Integrated ASSE 1070 Certified Scald Protection

The touchless operation and elegant profiles of Alpina® series faucets can enhance the look of any restroom. The compact control box delivers a host of options – including scald protection and innovative power supply choices – all neatly secured below-deck.

Integrated Scald Protection

All Alpina dual supply models feature integral ASSE 1070 certified thermostatic protection for added safety.

Durable Construction

Heavy-duty, one-piece cast brass body with vandal resistant outlet is designed to withstand abuse and tampering.

New and Innovative Power Options

In addition to AC and DC, we now offer LTPS and SSPS power systems with Alpina faucets. Both deliver easy installation and maintenance-free performance.

New Quick-Connect Controller

Our slim profile, quick-connect controller provides easy electronics connection and allows the faucet to be operational in just minutes.



Power Options

LTPS

Long Term Power System
Maintenance-free for 15 years or more.

SSPS

Self Sustaining Power System
Uses flow of water to create and store power.

AC

Plug-In or Hard-Wire

DC

4 'AA' Batteries

E-Tronic® 80 Series touchless lavatory faucet

- **Integrated ASSE-certified** thermostatic protection cuts installation time by 50%
- **Dependable operation** with field-adjustable modes and detection ranges for optimum performance
- **Matching soap dispenser** available in polished chrome or matte black finish



EQ Series touchless lavatory faucet

- **Integrated ASSE-certified** thermostatic protection eliminates as many as six leak points
- **Heavy duty** one-piece brass spout and waterproof electronics for unsurpassed reliability
- **Water savings** a choice of 2.5 GPM or 1.5 GPM hand sprays with pause control



EVR Series touchless lavatory faucet

- **Integrated ASSE-certified** thermostatic protection to help prevent scalding
- **Durable** with heavy-duty brass body with vandal resistant outlet
- **Secure, compact** control box conceals power, solenoid, mixing valve, and supply



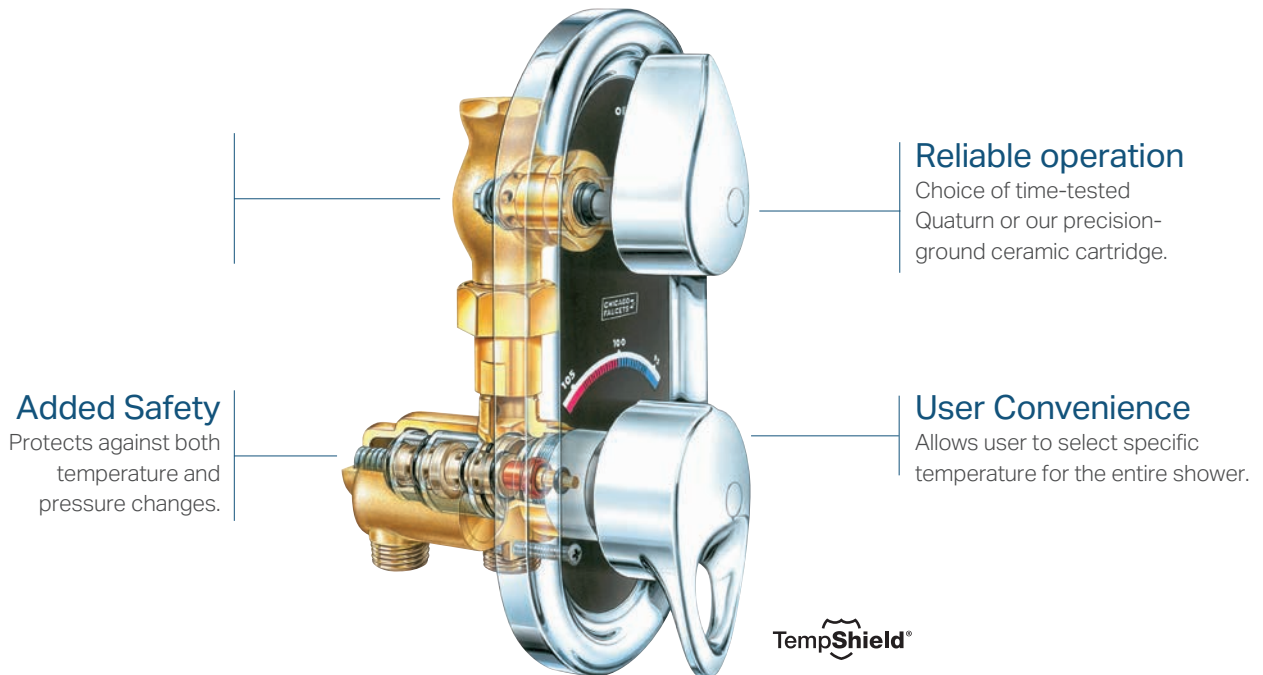
410-T and 420-T Series single control lavatory faucet

- **Integrated ASSE-certified** thermostatic protection built right into the faucet
- **Reliable**, high quality ceramic discs are tested up to 500,000 cycles
- **Fast, easy installation** cuts install time in half



2500 Series thermostatic/pressure balancing shower valve

The 2500 Series thermostatic/pressure balancing valve allows the user to select a precise water temperature for showering and will maintain that temperature regardless of fluctuations in incoming pressure or temperature. Tested and factory preset not to exceed 112° F, the TempShield helps safeguard against scalding.



Add our shower slide bars for additional **ADA protection**



Use our ADA compliant grab bars to complete your shower system for additional patient safety.

- **Designed for shower systems** with integrated locking hand spray holder
- **Durable** stainless steel construction with polished chrome finish
- **Versatile** design in 24" and 36" lengths with models that include hand shower and hose



1920 Series thermostatic/pressure balancing shower valves

- **Extra safety** with protection against changes in both pressure and temperature
- **Advanced** thermal actuator technology, maintains a consistent temperature
- **Versatile** design with a choice of round or square trim and three handle styles



1910 Series pressure balancing shower valve

- **Immediate** response to changes in hot or cold water pressure to maintain safe temperature
- **Proven** and dependable ceramic cartridge for smooth operation
- **Rugged** brass valve body provides unsurpassed durability



763 Series shower diverter valve

- **4-port**, 3-position brass valve with one inlet and 3 independent outlets
- **Indexed** slip flange for ease-of-use



150 Series hand spray assembly

- **Choice** of 1.5 GPM or 2.5 GPM hand spray with pause control
- **Prevents** back flow with in-line atmospheric vacuum breaker
- **Durable** 59" hose in stainless steel or vinyl



Behavioral health

Increasing room safety to reduce suicide risk

In 2007, the Joint Commission established suicide prevention as a National Patient Safety goal. Their Technical Expert Panel recommended that psychiatric hospitals and inpatient psychiatric units in general medical/surgical hospitals should be made "ligature-resistant" to decrease the risk of suicide by hanging.

Incidence of Inpatient Suicides



As many as
65
inpatient suicides occur each year in the United States.

Almost
75%
of inpatient all suicides occurred during psychiatric treatment.

Over
70%
of inpatient suicides were reported to be the result of hanging.

Source:
Journal on Quality and Patient Safety 2018
The Joint Commission

ELR Series ligature resistant* touch free faucet

The added safety of ligature resistance and touchless operation is combined with the durability of a one-piece, cast brass body.

Ligature Resistant

Rounded and sloped design to minimize ligature points.

Durable Construction

Heavy-duty, one-piece cast brass body with recessed vandal resistant outlet to withstand abuse and tampering.

Optional **Commander™ handheld programming unit** maintains and monitors your faucets.

- Five Running Modes
- Hygiene Flush
- Track Usage



Secure, Compact Control Box

Conceals and secures power, solenoid, mixing valve, and supply.



Added Safety

Available with integral ASSE 1070 compliant thermostatic protection** to help prevent scalding.

Ligature Resistant shower trim*

- **Rounded**, sloped design minimizes ligature points
- **Tamper** resistant screws
- **Solid** brass construction to withstand abuse



Ligature Resistant shower head *

- **Sloped**, low profile design with no shower arm
- **Anchored** to wall with four tamper resistant screws
- **Adjustable** spray angle of 25° – 30°



1920 Series high-performance shower valve

- **Certified** to ASSE 1070 to help prevent scalding
- **Extra protection** by constantly monitoring both the water temperature and pressure
- **Advanced** a thermal actuator technology, maintains a consistent temperature



***DISCLAIMER** This product, when installed in accordance with the Installation Instructions, is designed to decrease the probability that it may be utilized as an apparatus for ligature. Chicago Faucets does not represent or warrant that this product is able to prevent death or injury, or resist all ligature attachment, and this product is not a substitute for the proper evaluation, treatment and supervision of persons at risk of suicide. Chicago Faucets makes no express or implied warranties regarding the ability of the product to prevent death or injury or resist all ligature attachment.

The Smart Choice For Healthcare Product Solutions.

We can help take the hassle out of selecting the right products for your hospital project. With a variety of fittings for every need, we enable engineers, designers, and contractors to improve water delivery throughout the entire facility.

To learn more about the options available, visit our website or contact us directly to discuss your requirements today.

Call: 847/803-5000

Write: customerservice.us@chicagofaucets.com

Visit: chicagofaucets.com/support/where-to-buy to find your Sales Representative or a Chicago Faucets plumbing distributor near you.



**CHICAGO
FAUCETS**
Geberit Group

Chicago Faucets, a member of the Geberit Group, is the leading brand of commercial faucets and fittings in the United States, offering a complete range of products for schools, laboratories, hospitals, office buildings, food service, airports, and sports facilities. Whatever your requirements may be, Chicago Faucets offers standard and made-to-order products that are designed to meet any commercial application.

© 2023 The Chicago Faucet Company. Product specifications subject to change without notice.

CF1087 06/23

2100 South Clearwater Drive, Des Plaines, IL 60018

Phone: 847/803-5000 | Fax: 847/849-1845 | Technical: 800/832-8783 | www.chicagofaucets.com

