

**CHICAGO FAUCETS**  
a Geberit company

2100 South Clearwater Drive  
Des Plaines, IL 60018  
Phone: 847-803-5000  
Fax: 847-803-5454  
www.chicagofaucets.com

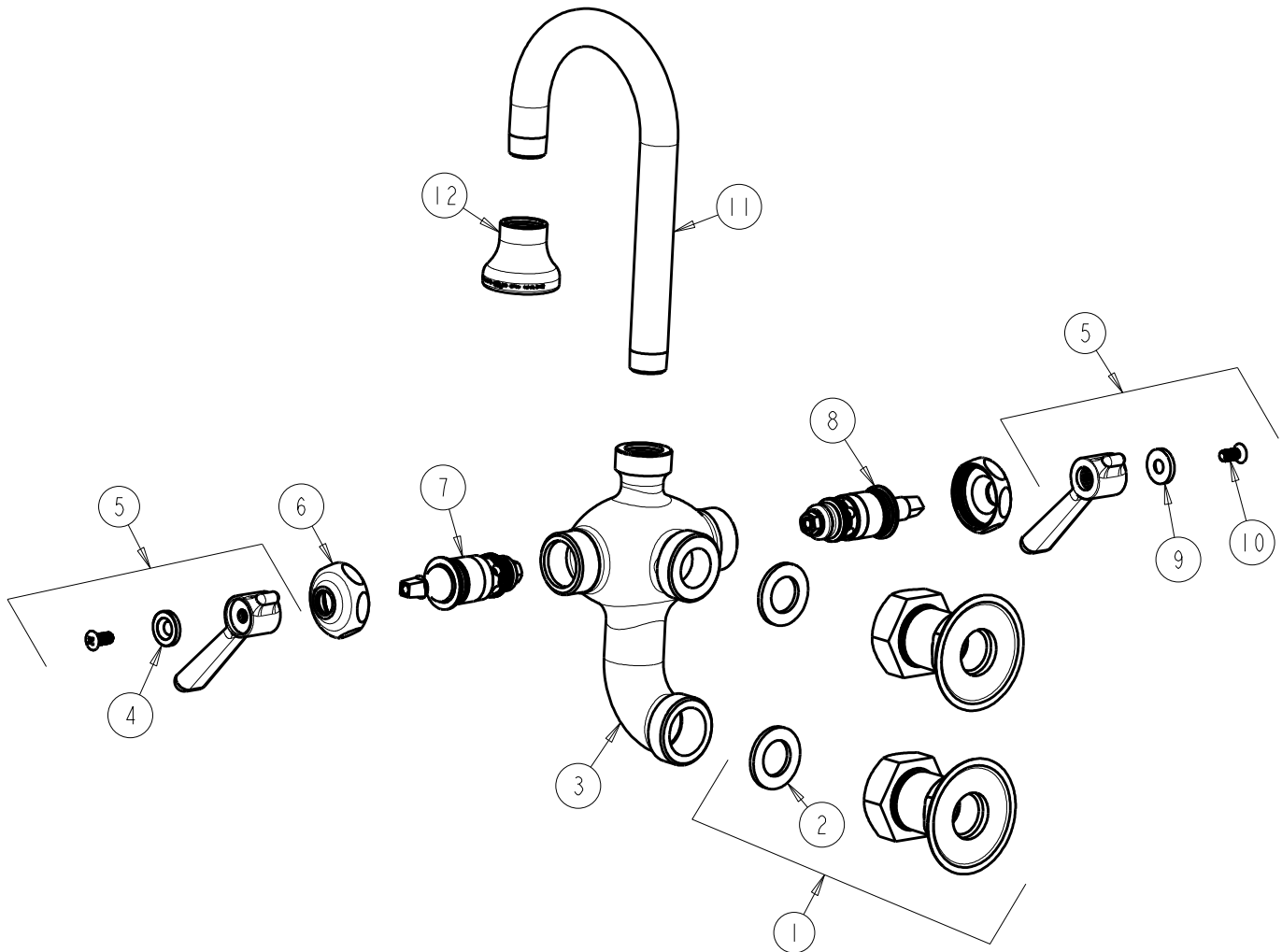
# REPAIR PARTS

BY: JAR    DATE: 10-18-11  
CHK: *JAR*    REV:

FITTING NO.  
**225-261ABCP**  
SUBMITTED MODEL NO.

**FOR TECHNICAL ASSISTANCE**  
1-800-TEC-TRUE (1-800-832-8783)

ITEM NO.



ITEM	PART NO.	DESCRIPTION
1	261-JKABCP	SHANK ASSEMBLY
2	65-006JKNF	WASHER
3	—	VALVE BODY (NOT SOLD SEPARATELY)
4	633-123JKNF	INDEX BUTTON (BLUE)
5	369-PRJKCP	LEVER HANDLE ASSEMBLY (PAIR)
6	1-214JKCP	CAP
7	1-099XTJKABNF	QUATURN UNIT (RH)
8	1-100XTJKABNF	QUATURN UNIT (LH)
9	633-023JKNF	INDEX BUTTON (RED)
10	420-010JKRCF	SCREW, 10-32 UNC PH 1/2
11	225-001JKCP	TUBE SPOUT
12	E4FJKABCP	ROSE SPRAY OUTLET 2.0 GPM