

CHICAGO FAUCETS
a Geberit company

2100 South Clearwater Drive
Des Plaines, IL 60018
Phone: 847-803-5000
Fax: 847-803-5454
www.chicagofaucets.com

REPAIR PARTS

BY: SID DATE: 09-24-01
CHK: *SR* REV: 10-05-15

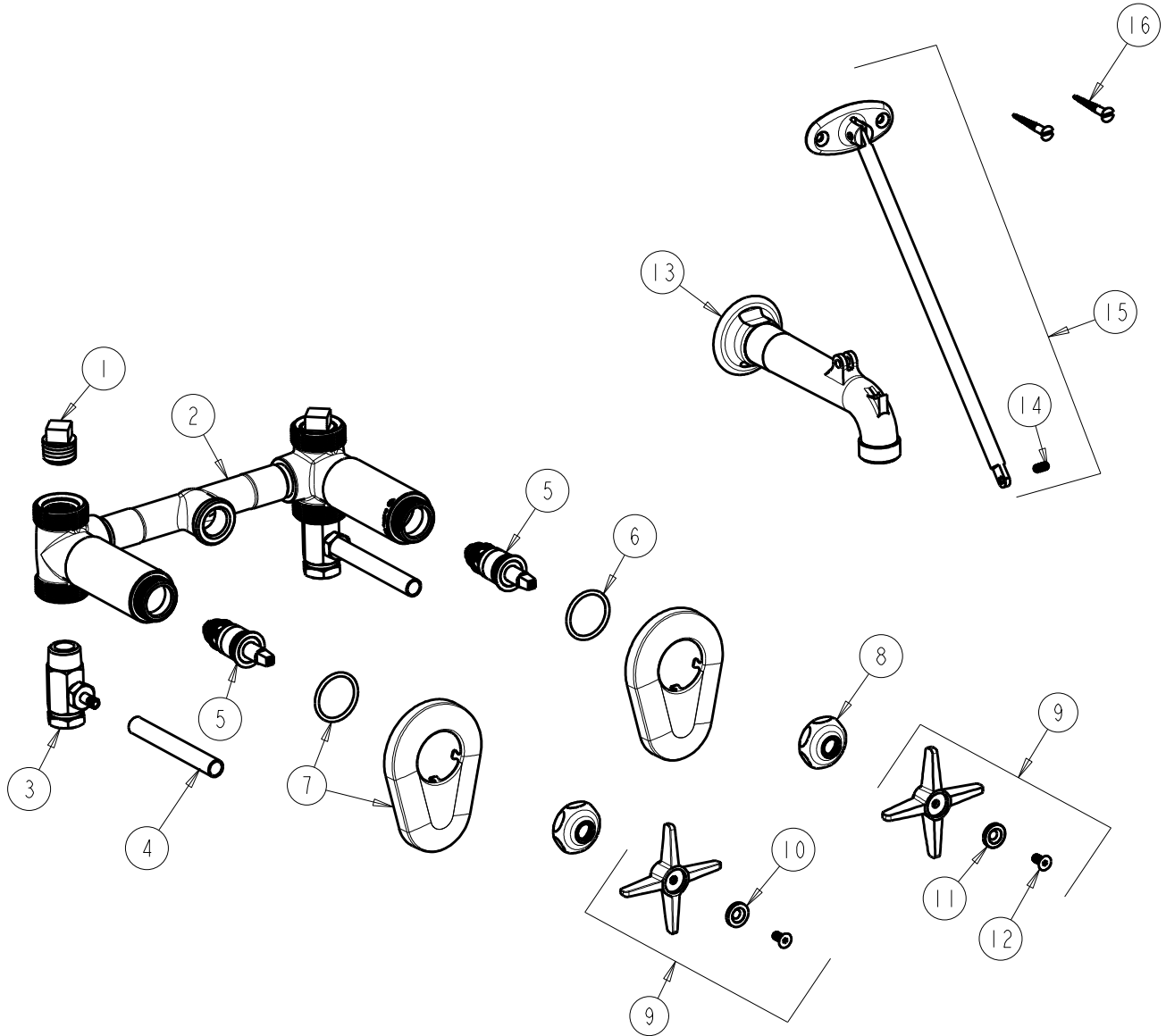
FITTING NO.

782-ISCP

SUBMITTED MODEL NO.

ITEM NO.

FOR TECHNICAL ASSISTANCE
1-800-TEC-TRUE (1-800-832-8783)



ITEM	PART NO.	DESCRIPTION	ITEM	PART NO.	DESCRIPTION
1	234-032JKABRCF	1/2 NPT PLUG	9	633-PRJKCP	4-ARM HANDLE ASSEMBLY
2	-----	VALVE BODY (NOT SOLD SEPARATELY)	10	633-023JKNF	INDEX BUTTON (RED)
3	769-013KJKRBF	INTEGRAL STOP VALVE	11	633-123JKNF	INDEX BUTTON (BLUE)
4	769-005JKNF	INTEGRAL STOP SLEEVE	12	420-020JKNF	SCREW, 1/8 FLAT HEX HEAD X 1/2
5	217-XTLHJKABNF	CARTRIDGE, SLO-COMPRESSION (LH)	13	782-001JKKCP	CAST SPOUT ASSEMBLY
6	5235-107JKNF	O-RING	14	665-116JKNF	SET SCREW
7	769-201JKCP	WALL FLANGE & O-RING	15	897-013KJKCP	BRACE ROD ASSEMBLY
8	1-214JKCP	CAP	16	173-006JKCP	FLAT HEAD WOOD SCREW