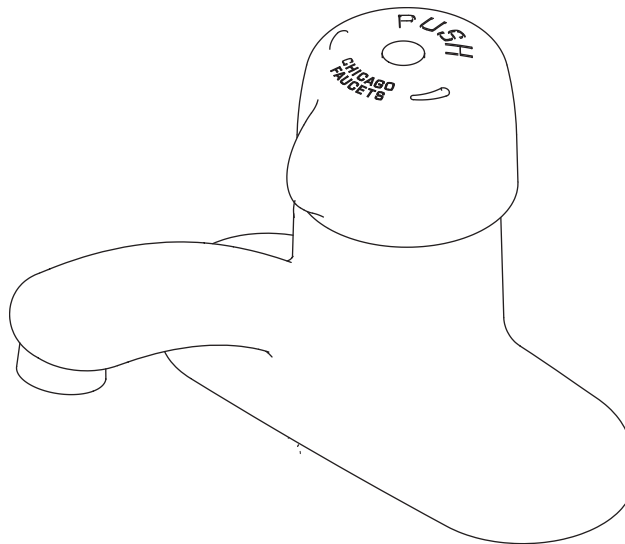




METERMIX™ 4" CENTERSET FAUCET

Installation Instructions



NOTE

Pressurized plumbing fixtures shall be installed in accordance with manufacturer's recommendations. The supply piping to these devices shall be securely anchored to the building structure to prevent installed device from unnecessary movement when operated by the user. Care shall be exercised when installing the device to prevent marring the exposed significant surface.

Copyrights

© 2004 Geberit. All rights reserved. The information in this manual is subject to change without notice.

Notice to Installers

Please leave this manual with the facility manager after completing the faucet installation. This document contains information necessary for routine maintenance and servicing.



PRODUCT OVERVIEW

The MeterMix™ faucet provides the water savings of a metering faucet combined with the convenience of temperature adjustment.

METERMIX FEATURES

- MVP™ Metering Cartridge has proven performance and is backed by a 5-year warranty
- Two in-line check/screen assemblies
- Vandal resistant .5 GPM spray outlet
- Adjustable timing
- Variable temperature control
- Concealed adjustable temperature limit stop

- Vandal resistant, ADA compliant handle

SAFETY INFORMATION

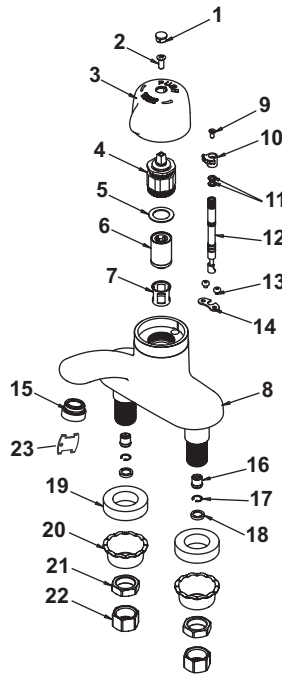
- **Read this entire instruction sheet to ensure proper installation.**
- **Compliance and conformity to local codes and ordinances is the responsibility of the installer.**

TECHNICAL SUPPORT

For additional technical assistance, call 800 / TEC-TRUE (800-832-8783) or visit our website at www.chicagofaucets.com.

The MeterMix Faucet consists of:

1. Handle Button
2. Screw (assembled)
3. Handle (assembled)
4. Actuator Assembly
5. Gasket
6. MVP Cartridge
7. Filter Basket
8. Faucet Body
9. Screw, Mixing Stem
10. Gear
11. O-Ring, Mixing Stem (Qty. 2)
12. Mixing stem
13. Screw (Qty. 2)
14. Bracket
15. Outlet
16. Check Cartridge (Qty. 2)
17. C-Clip (Qty. 2)
18. Filter/Screen (Qty. 2)
19. Plastic Spacer (Qty. 2)
20. Basin Washer (Qty. 2)
21. Locknut (Qty. 2)
22. Supply Nut (Qty. 2)
23. Vandal Resistant Outlet Key



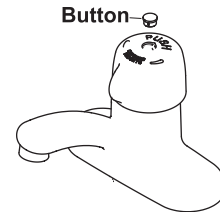
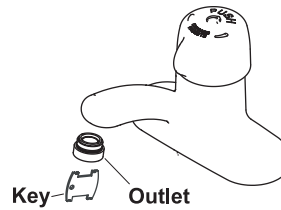
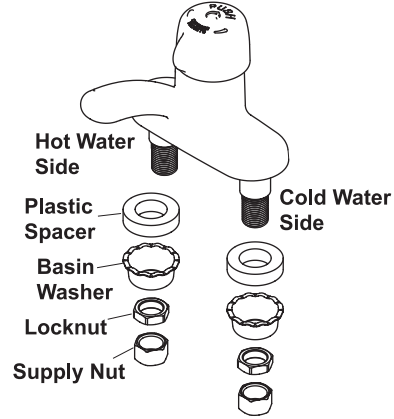
INSTALLATION

1. Turn off water supply to existing faucet and remove faucet, if necessary.
2. Clean faucet basin and clear away debris.
3. Mount the spout to top of base. Install the plastic spacer (if required), basin washers and locknuts to the faucet from underneath the base. Securely tighten the locknuts.

NOTE: Use silicon sealant for porous stone or plumbers putty as recommended by counter manufacturer.

⚠ Do not use a wrench on spout or inlet tubes. Flush lines before connecting supply tube to faucet. Faucet has inlet screens that can clog if not flushed.

4. Install the supply nuts to the water inlet tubes and connect tubes to faucet. Tighten connections securely.
5. Flush installed faucet before installing outlet.
6. Install outlet using key supplied. Do not overtighten.
7. Make all hot limit stop & timing adjustments (see page 4) prior to performing step 8.
8. Install handle button.



HOT LIMIT STOP ADJUSTMENT

Hot water output temperature is a factor of many variables including hot and cold water input temperature and pressure.

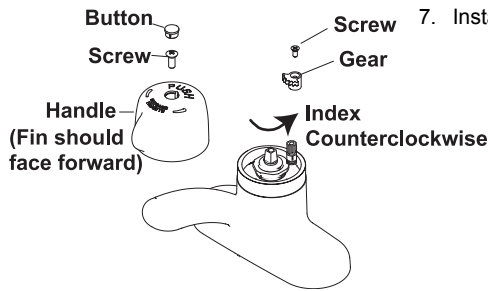
NOTE: Make sure hot water supply valve is purged of ambient temperature water before making this adjustment. Incoming hot water must be at full/hottest temperature while making this adjustment.

NOTE: Factory setting of the faucet hot limit stop is full HOT position. To set to a cooler temperature, follow these steps.

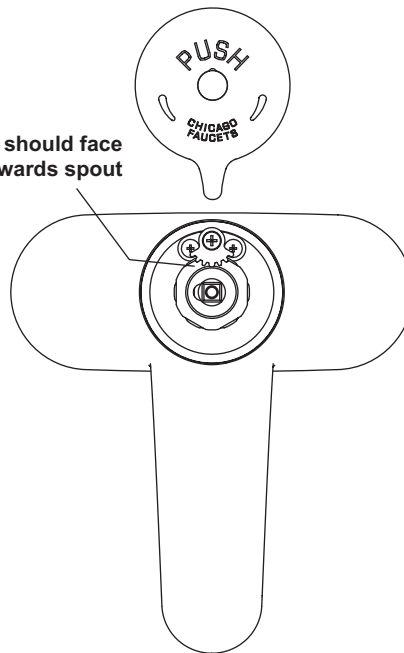
1. Remove handle button and screw from handle and remove handle. Handle can be removed by gently tapping with rubber mallet or other soft object while pulling up, or wiggle while pulling up.
2. Remove screw from gear.
3. Carefully pull the gear off the splined shaft and rotate counterclockwise one index position at a time. Slide gear on shaft and rotate gear/stem assembly so the gear teeth face forward, toward spout.
4. Reinstall screw to top of gear, then install handle and screw.
5. Check maximum hot water temperature and repeat steps 1-4 as needed.
6. Make timing adjustments as shown on the next page as needed.
7. Install handle button.

NOTE: Index mark on stem will align with groove on gear for full hot/zero position.

NOTE: Gear must face forward as shown, and handle fin should also face forward on spout. Following these instructions will index gear and handle. Gear and handle must be indexed to assemble and rotate properly.



Gear teeth should face forward towards spout



TIMING ADJUSTMENT

Flow cycle time may be increased or decreased by adjusting the timing. Faucet comes factory preset to meet applicable standards, which required at least 10 seconds and no more than .25 GPM per cycle at 60 PSI for both hot and cold inlet pressures. Based on supply conditions, timing may be adjusted to achieve the desired setting.

NOTE: Timing must be checked with handle in place with screw. Purge any air by activating faucet 8 times rapidly, then check the cycle time.

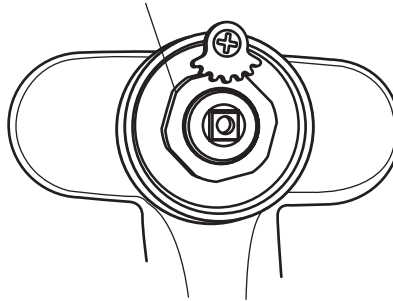
1. Remove the button, screw and handle. Handle can be removed by gently tapping with rubber mallet or other soft object while pulling up, or wiggle while pulling up.
2. Turn the plastic serrated adjustment nut to adjust the timing: counterclockwise to shorten time, clockwise to lengthen time.
3. Adjust incrementally. After each adjustment, install handle and fully tighten screw before checking cycle time. When desired cycle time is achieved, install handle, screw and button.

NOTE: Gear must face forward as shown, and handle fin should also face forward on spout. Following these instructions will index gear and handle. Gear and handle must be indexed to assemble and rotate properly.

IMPORTANT: Small variations from cycle-to-cycle should be expected.

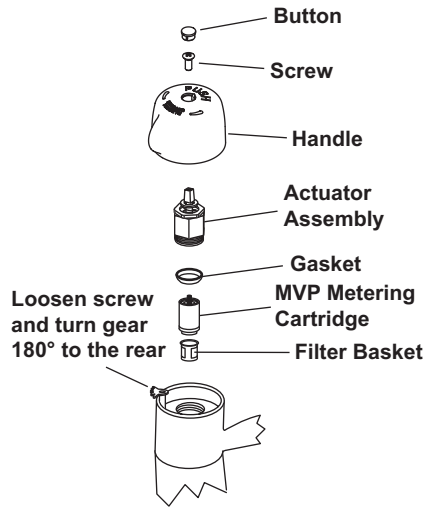
NOTE: Some new installations may produce a slight "closing noise". This is a result of air trapping and the noise will dissipate over time.

Plastic Serrated Adjustment Nut



MVP METERING CARTRIDGE REPLACEMENT

1. Remove handle button and screw from handle and remove handle. Handle can be removed by gently tapping with rubber mallet or other soft object while pulling up, or wiggle while pulling up.
2. Turn gear 180° (do not remove).
3. Using an adjustable wrench, loosen and unscrew the actuator assembly. Using a needle nose pliers, remove MVP metering cartridge.
4. Remove and discard the cartridge and gasket.
5. Remove filter basket. Clean filter basket, or replace if worn/damaged.
6. Install new MVP metering cartridge and gasket.
7. Install actuator and hand tighten until it bottoms out.
8. Using adjustable wrench, tighten actuator assembly.
9. Install handle, screw and button.



NOTE: Gear must face forward as shown, and handle fin should also face forward on spout. Following these instructions will index gear and handle. Gear and handle must be indexed to assemble and rotate properly.

TROUBLESHOOTING

Low flow

- Check supply line for adequate flow. If supply is sufficient, check inlet and outlet screens for obstructions.
- Check MVP filter basket for obstructions. See *Cartridge Replacement* instructions above for removal.

Water too hot

- See *Hot Limit Stop Adjustment*.

Timing is too short or too long

- See *Timing Adjustment*.

Handle is difficult to operate.

- Handle installed incorrectly. Remove button, screw and handle then reinstall handle. Make sure handle is engaged properly on shaft, and that gear teeth are not binding.
- Check actuator assembly, mixing stem, bracket, gear, and handle teeth for wear. Replace parts as necessary.

TECHNICAL SUPPORT

For additional technical assistance, call **800 / TEC-TRUE (800-832-8783)** or visit our website at www.chicagofaucets.com.



GEBERIT WARRANTY

PRICES - Prices quoted herein are subject to change without notice and all orders are accepted subject to prices prevailing at time of order entry.

TERMS OF PAYMENT - Terms are 2% 45 days 60 net. Cash discounts must be calculated on the total amount of the invoice, before transportation charges and any applicable taxes. A 1-1/2% per month service charge will be added to all past due invoices. Annual rate of 18%.

TAX NOTICE - Any manufacturers' or sales tax applicable thereto will be added to the prices and terms herein contained.

CREDIT APPROVAL - All orders are subject to credit approval by the CHICAGO FAUCET COMPANY'S Credit Department prior to acceptance of the order. Orders may be refused, delivery may be withheld or shipments stopped in transit on accepted orders without any liability on the Company's part, if, in its sole opinion, the buyer's ability to pay for the merchandise on the terms and conditions contained herein is in doubt. All New Accounts must submit a \$500.00 net minimum order with credit and bank references.

SHIPPING AND HANDLING - All sales are F.O.B., shipping point. The Company will allow full freight at the prevailing CWT rate on shipments of Company's products with a net invoice value of \$1,500.00 or 24 pieces, * when shipments are within the continental United States and have as destination the buyer's usual business address or designated job location. Freight allowed on shipments to Alaska shall be calculated F.A.S., Seattle, Washington. The use of the term "F.A.S., Seattle, Washington" in this paragraph shall not be deemed to impose any risk or obligation concerning the goods or the shipment thereof upon the Company after the delivery of the goods to the initial carrier. Under no circumstances will a direct C.O.D. shipment be made to the wholesaler's customer.

* Original P.O. must meet FFA terms. Subsequent additions will not be considered towards freight allowance.

Routing of shipments shall be determined at the sole discretion of the Company.

DELIVERY - Delivery to the initial carrier shall constitute delivery to the buyer. CHICAGO FAUCET COMPANY'S responsibility, insofar as transportation risks are concerned, ceases upon delivery in good order to such carrier, and all goods are shipped at the buyer's risk. The buyer is requested to check each incoming shipment carefully before acknowledging receipt from the carrier. If goods are visibly damaged the buyer should insist that written confirmation of the damage be noted on the freight bill by the carrier. If concealed damage is noted after unpacking, the buyer should immediately notify the carrier involved and obtain verification of the damage from the carrier.

Claims for shortages in orders will not be considered unless presented to the Company within 30 days after receipt of goods by the buyer.

DAMAGE - All claims for damage in transit, shortage, or nondelivery must be filed against the carrier by the buyer.

CHICAGO FAUCET COMPANY will not be responsible for delay in shipment of goods, or for any damages suffered by reasons thereof, when such delay is occasioned by accident, fire, flood, embargo, strike, war, labor stoppages, inadequate transportation, shortage of materials, delay or default on the part of vendors, government regulations or any other cause beyond its control.

CHICAGO FAUCETS BRAND PRODUCTS ARE SUBJECT TO THE FOLLOWING WARRANTIES:

LIMITED WARRANTY - The CHICAGO FAUCET COMPANY ("Chicago Faucets") extends to the original consumer the following warranties for Genuine Chicago Faucets manufactured products and components, or other components under the Chicago Faucets Warranties, (collectively, the "Products") used in commercial or residential applications.

LIFETIME FAUCET WARRANTY - The "Faucet", defined as any metal cast, forged, stamped or formed portion of the Product, not including electronic or moving parts or water restricting components, or other components covered under other Chicago Faucet warranties, is warranted against manufacturing defects for the life of the Product.

FIVE YEAR CARTRIDGE WARRANTY - COMMERCIAL - The "Cartridge", defined as the metal portion of any Product typically referred to by the product numbers containing 1-099, 1-100, 1-310, 377X, 217X and 274X, excluding any rubber or plastic components, is warranted against manufacturing defects for a period of five (5) years from the date of Product purchase. All Cartridges included in Chicago Faucet's Single Control or Shower Products are also warranted against manufacturing defects for a period of five (5) years from the date of Product purchase.

LIFETIME CARTRIDGE WARRANTY - RESIDENTIAL - For products used in Residential applications, the "Cartridge", as described above, is warranted for the lifetime of the faucet.

ONE-YEAR FINISH WARRANTY - COMMERCIAL - For Products used in commercial applications, the finish of the Product is warranted against manufacturing defects for a period of one-year from the date of Product purchase. PVD finishes installed in public or commercial areas carry a one-year warranty from date of installation.

ONE-YEAR FINISH WARRANTY - RESIDENTIAL - PVD finishes installed in public or commercial areas carry a one-year warranty from date of installation.

FIVE-YEAR FINISH WARRANTY - RESIDENTIAL - For Products used in residential applications, the finish of the Product is warranted against manufacturing defects for a period of five (5) years from the date of Product purchase. ForeverShine™ finishes installed in residential-use applications are warranted not to corrode, tarnish or discolor for the life of the product.

ELECTRONIC FAUCETS MECHANICALS WARRANTY - Are warranted for 5 years from the date of installation.

ELECTRONIC FAUCETS FINISHES WARRANTY - Are warranted for one-year from the date of installation.

ELECTRONIC FAUCETS ELECTRONICS AND SOLENOID WARRANTY - Are warranted for one-year from the date of installation.

OTHER WARRANTIES - All other Products not covered above are warranted against manufacturing defects for a period of one (1) year from the date of Product purchase.

GEBERIT BRAND PRODUCTS ARE SUBJECT TO THE FOLLOWING WARRANTIES:

KITCHEN ACCESSORIES shall be free from defective material and workmanship for a period of 1-year from date of installation.

BATH WASTE and OVERFLOW products carry a limited lifetime warranty on the material and mechanism
Tessera™ concealed tank & carrier units carry a 10-year limited warranty on the flushing mechanisms and limited lifetime warranty on the tank and carrier.

PLATED FINISHES carry a one-year limited warranty from date of installation with the exception of those finishes designated as ForeverShine™.

ForeverShine™ finishes installed in residential-use applications are warranted not to corrode, tarnish or discolor for the life of the product.

ForeverShine™ finishes installed in commercial use applications are warranted for a period of one-year from date of installation.

ELECTRONIC FAUCETS, FLUSHOMETERS AND METERING MECHANICALS WARRANTY - Are warranted for 5 years from the date of installation.

ELECTRONIC FAUCETS FINISHES WARRANTY - Are warranted for one-year from the date of installation.

ELECTRONIC FAUCETS ELECTRONICS AND SOLENOID WARRANTY - Electronics are warranted for 1 year from the date of installation, solenoid is warranted for 3 years from date of installation.

PRESSURE ASSIST TOILET SYSTEMS - Are warranted for 5 years from date of installation (pressure vessel), limited lifetime for the carrier plus a one-year warranty on toilet bowl and flush actuator plate.

Chicago Faucets will either replace or repair the defective equipment or refund the purchase price, at its option, if an inspection by Chicago Faucets or its authorized representative discloses any manufacturing defects in material or workmanship during this period. These provisions do not include the battery shipped with the Electronic Products. Chicago Faucets will not be liable for any labor or other expenses not specifically stated above and disclaim any responsibility for incidental or consequential damages.

Warranties implied by law, including that of merchantability are expressly limited to the period of this warranty. This limitation and exclusion does not apply in those states that do not allow limitations on the duration of implied warranties. Or the exclusion may not apply to you. This warranty gives you specific legal rights and you may have other rights, which vary, from state to state.

RETURNED GOODS - Merchandise may not be returned to the Company for credit unless the buyer obtains prior written approval from the Company. Such approval will be granted only when material to be returned is a Standard or MTO product and is listed in the current price sheets. Credit will be issued on all material returned by permission, at the prevailing price at time of purchase, less a handling charge of up to 35%. No credit whatever will be allowed on products designated as Custom (Custom products are products not designated as Standard or MTO) which have been shipped according to customers' specification. Material, which is marred or damaged, will not be accepted. All transportation costs for returned goods must be paid by the buyer.

ORDER MODIFICATION/CANCELLATION - Orders for Standard and MTO products can be modified or cancelled up to the time the order is being processed for shipment. A Chicago Faucets customer service representative must confirm the status of order to be cancelled or changed in order to avoid any restocking fees or charges. Changes to the order can potentially extend the acknowledged availability date. Once entered, Custom products are non-cancelable, and will be shipped and billed to the customer.

The Company reserves the right to make reasonable changes of any kind in its products and their packaging without notice.

MINIMUM CHARGE - No invoice will be made for less than \$100.00 (One Hundred Dollars Net) on faucets, valves and fittings or repair parts.

NOTE: Possession of this price sheet by any person is not to be construed as an offer to sell him or anyone else, the goods listed herein at prices stated.