

**CHICAGO FAUCETS**  
a Geberit company

2100 South Clearwater Drive  
Des Plaines, IL 60018  
Phone: 847-803-5000  
Fax: 847-803-5454  
www.chicagofaucets.com

# REPAIR PARTS

BY: SID DATE: 09-20-02

CHK: *AK* REV: 03-15-16

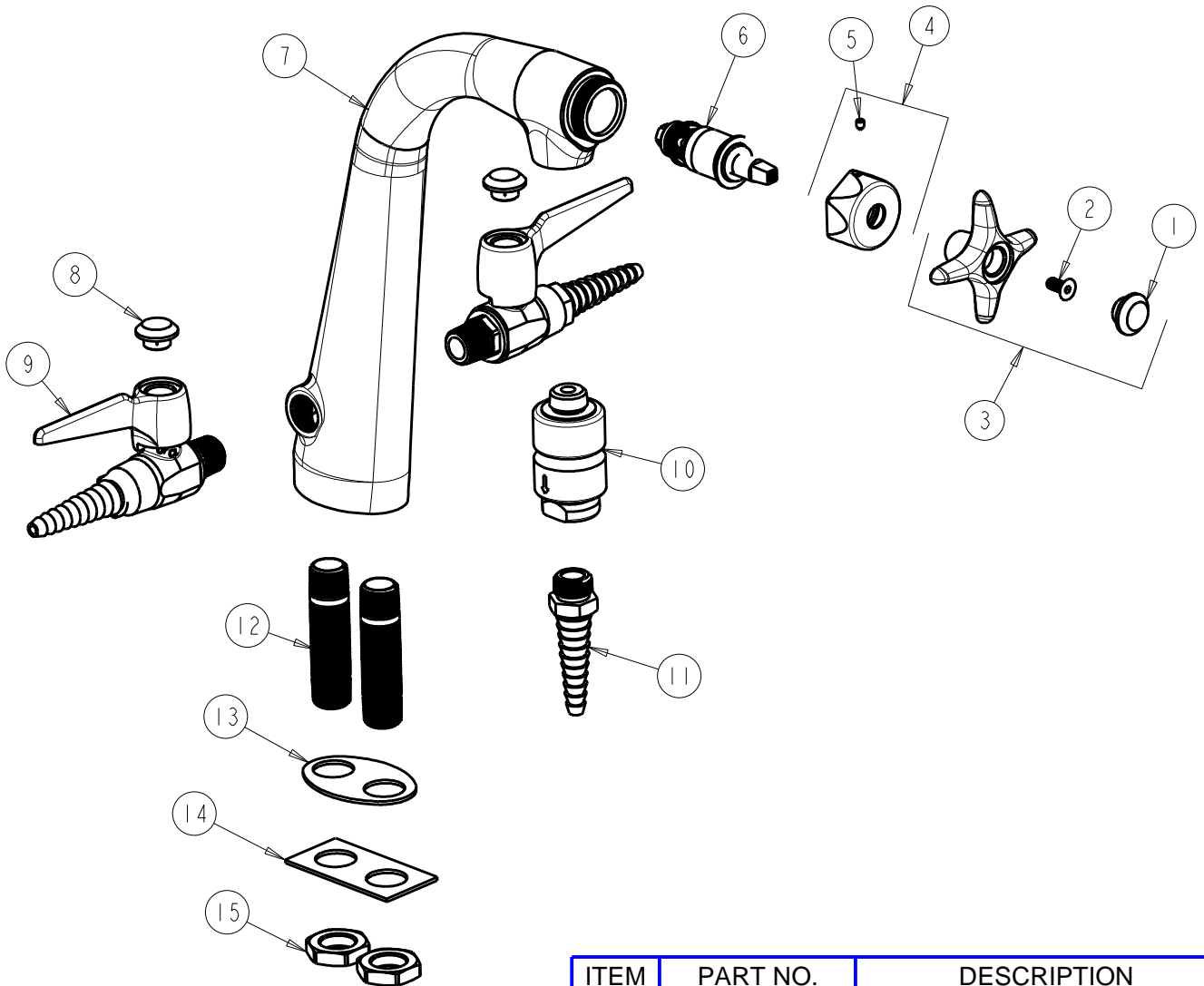
FITTING NO.

1332-E22E7-204CP

SUBMITTED MODEL NO.

ITEM NO.

**FOR TECHNICAL ASSISTANCE**  
1-800-TEC-TRUE (1-800-832-8783)



ITEM	PART NO.	DESCRIPTION
1	216-178JKNF	BUTTON 'CW'
2	420-020JKNF	SCREW, 1/8 FLAT HEX HEAD X 1/2
3	204-CWJKCP	HANDLE ASSEMBLY
4	444-105JKCP	VP CAP NUT WITH VR SCREW
5	1332-005JKNF	SCREW, VANDAL RESISTANT
6	217-XTLHJKABNF	CARTRIDGE, SLO-COMPRESSION (LH)
7	-----	VALVE BODY (NOT SOLD SEPARATELY)
8	216-328JKNF	BUTTON 'GAS'
9	909-LEB	BALL VALVE
10	E22JKCP	VACUUM BREAKER
11	E7TJKCP	SERRATED NOZZLE OUTLET 3/8 NPT
12	-----	MALE SHANK 2-5/8 X 3/8
13	1332-003JKNF	GASKET
14	1332-002JKNF	PLATE
15	705-008JKRBF	NUT