

**CHICAGO FAUCETS** 

a Geberit company

2100 South Clearwater Drive  
Des Plaines, IL 60018  
Phone: 847-803-5000  
Fax: 847-803-5454  
www.chicagofaucets.com

# REPAIR PARTS

BY: SID DATE: 11-06-07

CHK:  REV:

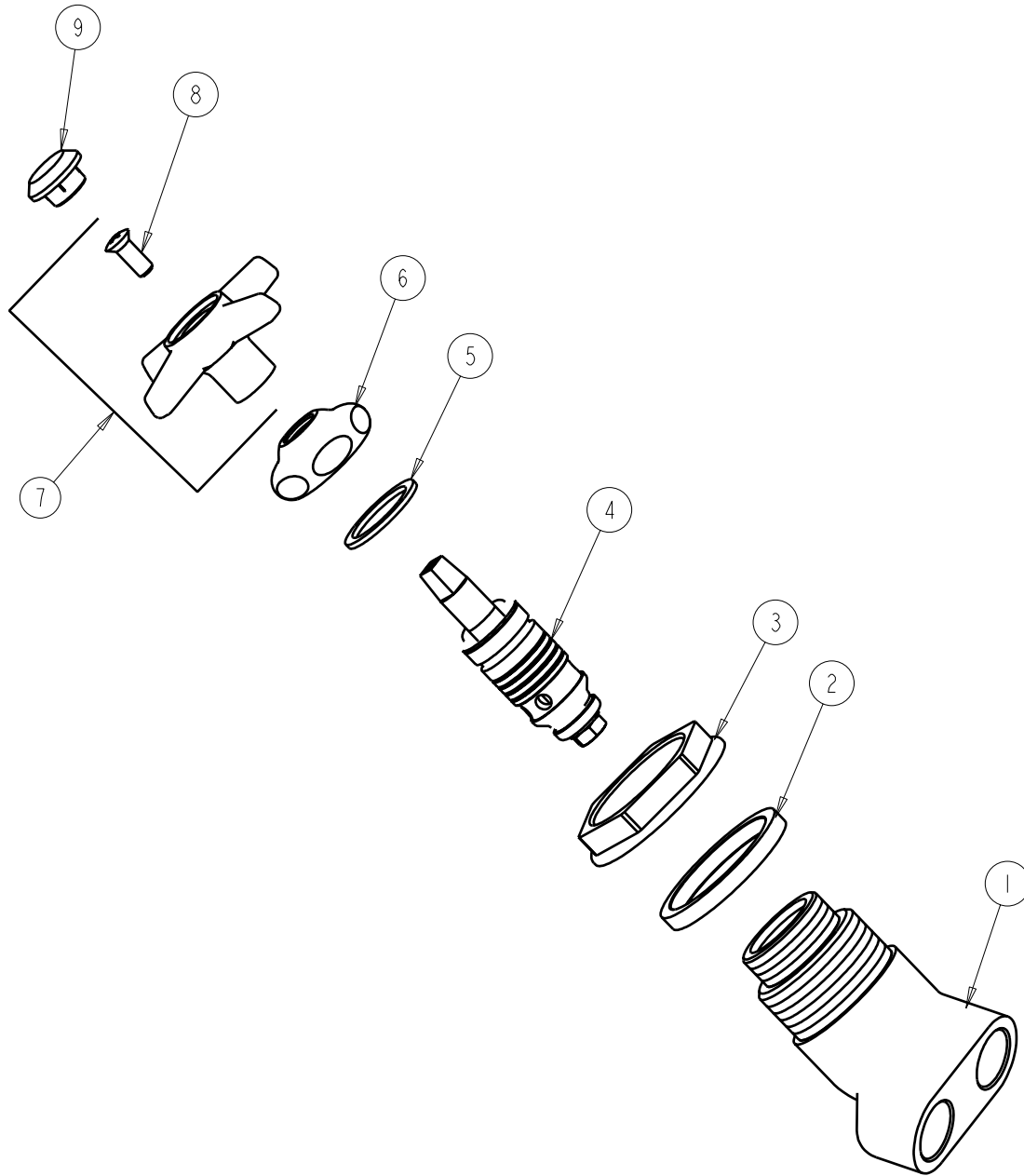
FITTING NO.

**915-CP**

SUBMITTED MODEL NO.

ITEM NO.

**FOR TECHNICAL ASSISTANCE**  
1-800-TEC-TRUE (1-800-832-8783)



ITEM	PART NO.	DESCRIPTION
1	----	ANGLE VALVE NOT SOLD SEPARATELY
2	----	SHOULDER WASHER
3	----	HOLD DOWN NUT
4	937-XSTJKNF	CARTRIDGE, SLO-COMP. (FOR STEAM)
5	1-343JKNF	GASKET
6	1-214JKCP	CAP
7	204-LESS216-28JKCP	HANDLE ASSEMBLY
8	420-010JKRCF	SCREW, 10-32 UNC PH 1/2
9	216-228JKNF	BUTTON 'STM'