



a Geberit company

2100 South Clearwater Drive
Des Plaines, IL 60018
Phone: 847-803-5000
Fax: 847-803-5454
www.chicagofaucets.com

REPAIR PARTS

BY: SID DATE: 08-19-15
CHK: *AK* REV:

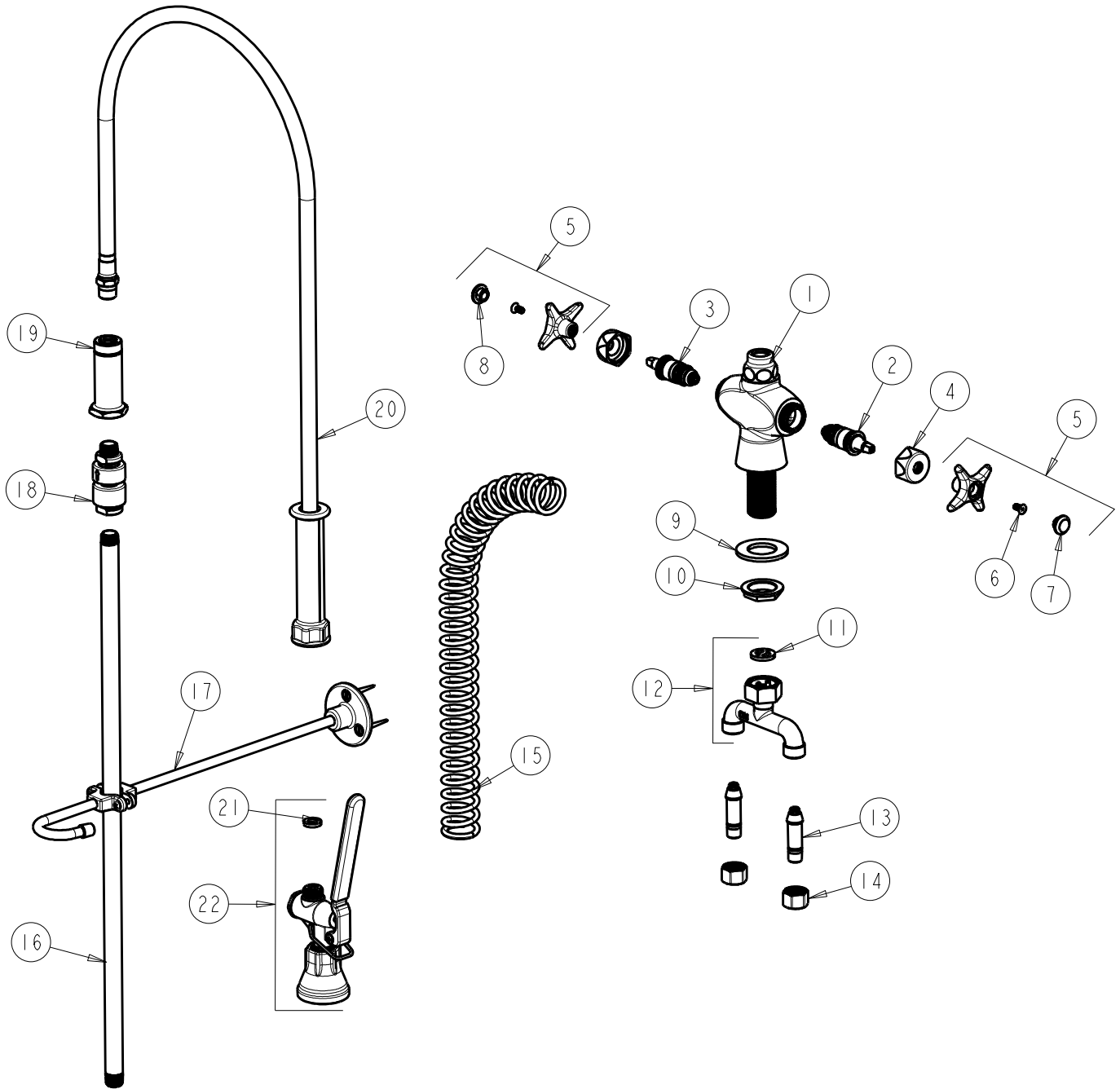
FITTING NO.

919-LVB204AB

SUBMITTED MODEL NO.

ITEM NO.

FOR TECHNICAL ASSISTANCE
1-800-TEC-TRUE (1-800-832-8783)



ITEM	PART NO.	DESCRIPTION	ITEM	PART NO.	DESCRIPTION
1	-----	VALVE BODY (NOT SOLD SEPARATELY)	12	50-010JKABRBF	TEE CONNECTION ASSEMBLY
2	217-XTRHJKABNF	CARTRIDGE, SLO-COMPRESSION (RH)	13	58-018JKABRBF	TAIL PIECE ASSEMBLY
3	217-XTLHJKABNF	CARTRIDGE, SLO-COMPRESSION (LH)	14	49-005JKRBF	COUPLING NUT
4	444-005JKCP	CAP	15	919-014JKCP	SPRING
5	204-PRJKCP	HANDLE, 4 ARM	16	919-039JKABCP	3/8" NPT X 23" RISER
6	420-020JKNF	SCREW, 1/8 FLAT HEX HEAD X 1/2	17	902-MHJKCP	PIPE STRAP AND HOOK ASSEMBLY
7	216-178JKNF	BUTTON 'CW'	18	E23JKABCP	BACK-FLOW PREVENTER
8	216-128JKNF	BUTTON 'HW'	19	919-038JKABCP	GUIDE SHANK
9	50-014JKNF	STEEL WASHER	20	83-44ABNF	44" HOSE AND HANDLE ASSEMBLY
10	50-003JKRBF	LOCKNUT	21	919-243JKABNF	GASKET, .685 X .375 X .125
11	50-008JKABNF	RUBBER WASHER	22	90-LABCP	PRE-RINSE VALVE, LOW FLOW