



a Geberit company

2100 South Clearwater Drive
Des Plaines, IL 60018
Phone: 847-803-5000
Fax: 847-803-5454
www.chicagofaucets.com

REPAIR PARTS

BY: SID DATE: 11-01-01
CHK: *[Signature]* REV: 04-11-18

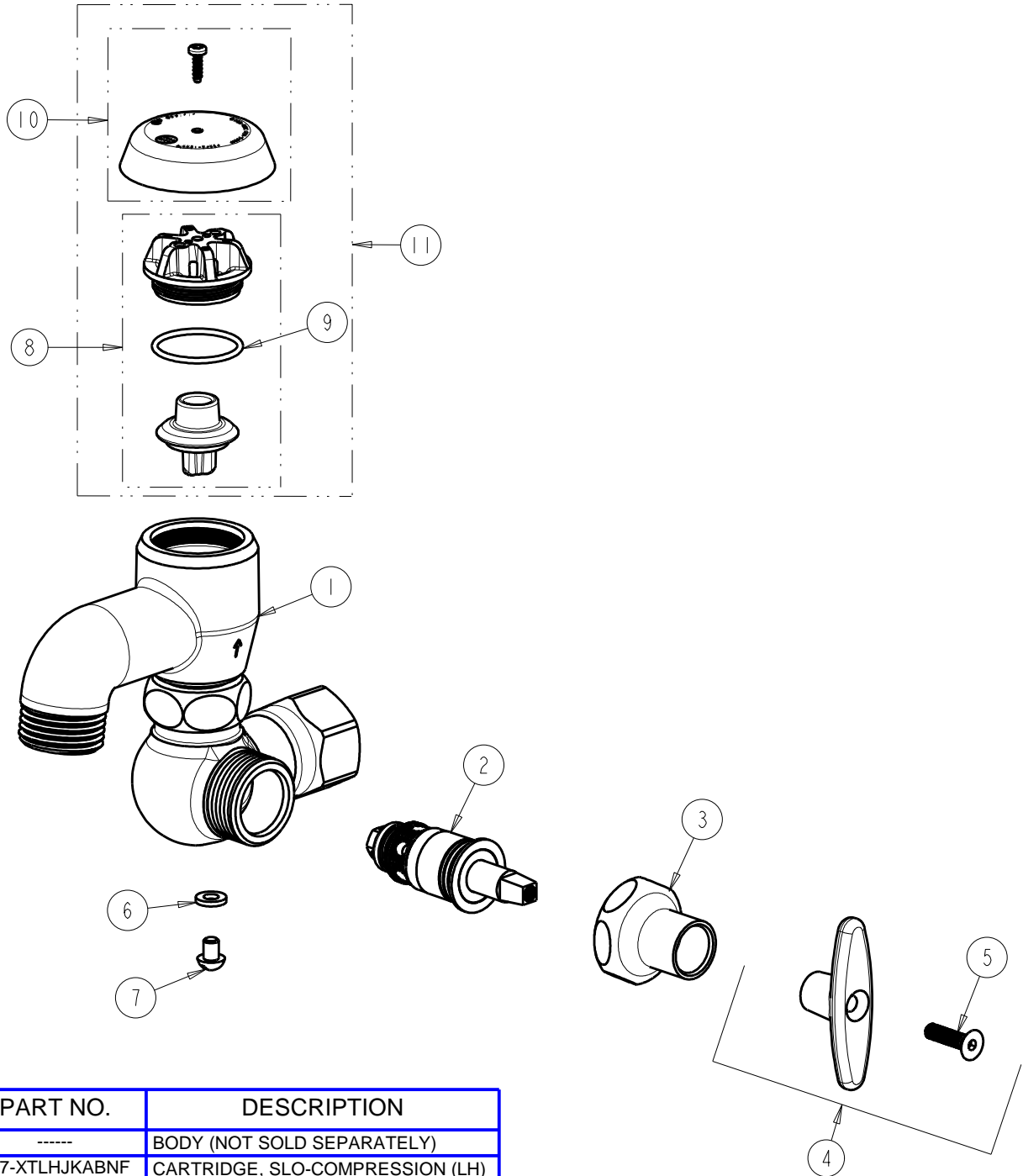
FITTING NO.

998-RCF

SUBMITTED MODEL NO.

ITEM NO.

FOR TECHNICAL ASSISTANCE
1-800-TEC-TRUE (1-800-832-8783)



ITEM	PART NO.	DESCRIPTION
1	-----	BODY (NOT SOLD SEPARATELY)
2	217-XTLHJKABNF	CARTRIDGE, SLO-COMPRESSION (LH)
3	1-246JKCP	NUT, CAP LOOSE KEY 1-1/8-18 UNEF
4	293-006JKRCF	TEE HANDLE (INCLUDES SCREW)
5	420-021JKNF	SCREW, 1/8 FLAT HEX HEAD X 1/2
6	998-004JKNF	WASHER
7	1-317JKBNF	SCREW
8	892-302KJKABNF	VACUUM BREAKER REPAIR KIT
9	80-007JKABNF	O RING 0.989 X .070
10	892-254JKCP	VACUUM BREAKER COVER w/SCREW
11	892-402KJKABNF	KIT, VACUUM BREAKER ASSEMBLY