

**CHICAGO FAUCETS**  
a Geberit company

2100 South Clearwater Drive  
Des Plaines, IL 60018  
Phone: 847-803-5000  
Fax: 847-803-5454  
www.chicagofaucets.com

# REPAIR PARTS

FITTING NO.

1301-GN2BVBE7-317XKCP

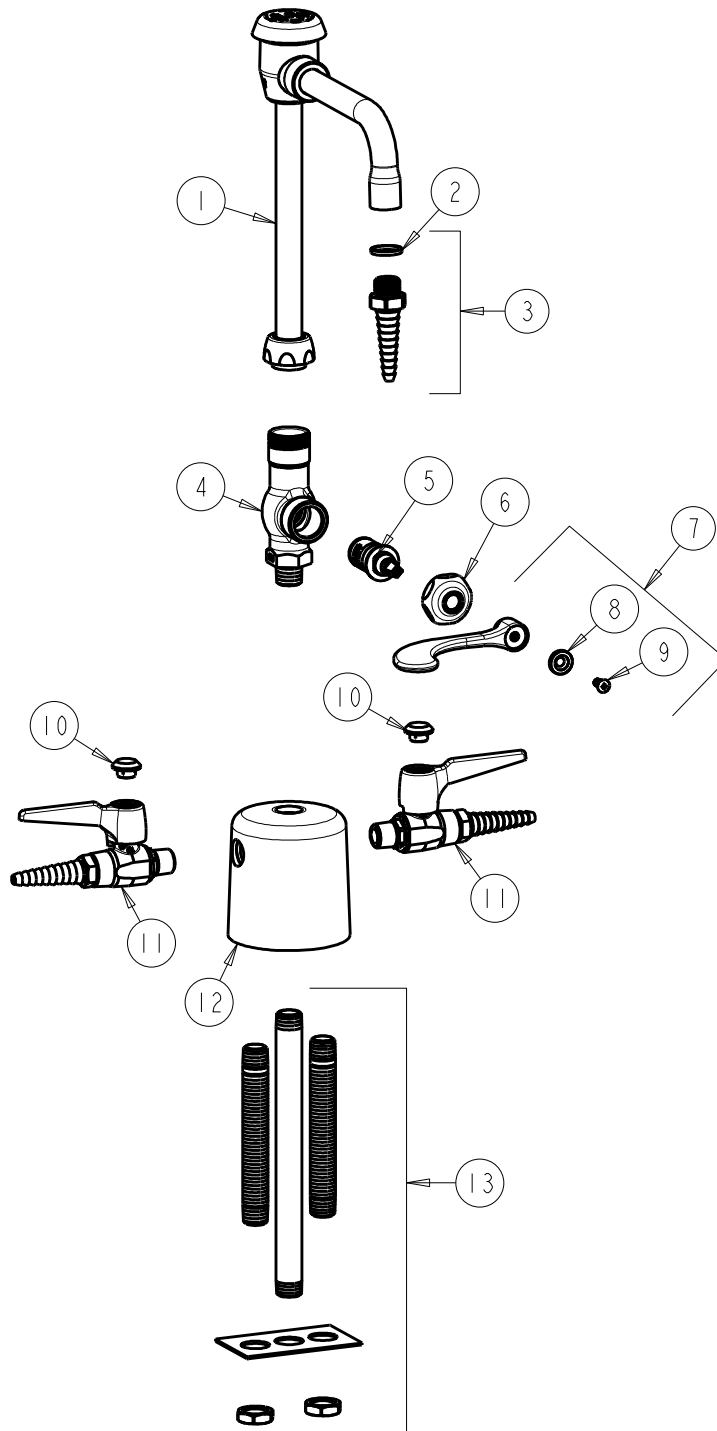
SUBMITTED MODEL NO.

ITEM NO.

BY: JAR DATE: 05-02-12

CHK: *JAR* REV:

**FOR TECHNICAL ASSISTANCE**  
1-800-TEC-TRUE (1-800-832-8783)



ITEM	PART NO.	DESCRIPTION	ITEM	PART NO.	DESCRIPTION
1	GN2BVBJKCP	SPOUT, VACUUM BREAKER	8	633-123JKNF	INDEX BUTTON (BLUE)
2	229-003JKNF	WASHER	9	420-010JKRCF	SCREW, 10-32 UNC PH 1/2
3	E7JKCP	SERRATED HOSE NOZZLE	10	216-328JKNF	BUTTON 'GAS'
4	----	BODY (NOT SOLD SEPARATLY)	11	909-LESS216-28CP	BALL VALVE
5	1-099XKJKNF	RH CERAMIC CARTRIDGE	12	1301-SBJKCP	TURRET
6	1-214JKCP	CAP	13	1301-SB1KJKRBF	SHANK ASSEMBLY
7	317-COLDJKCP	WRISTBLADE HANDLE			