

CHICAGO FAUCETS
a Geberit company

2100 South Clearwater Drive
Des Plaines, IL 60018
Phone: 847-803-5000
Fax: 847-803-5454
www.chicagofaucets.com

REPAIR PARTS

FITTING NO.

1332-317CP

SUBMITTED MODEL NO.

ITEM NO.

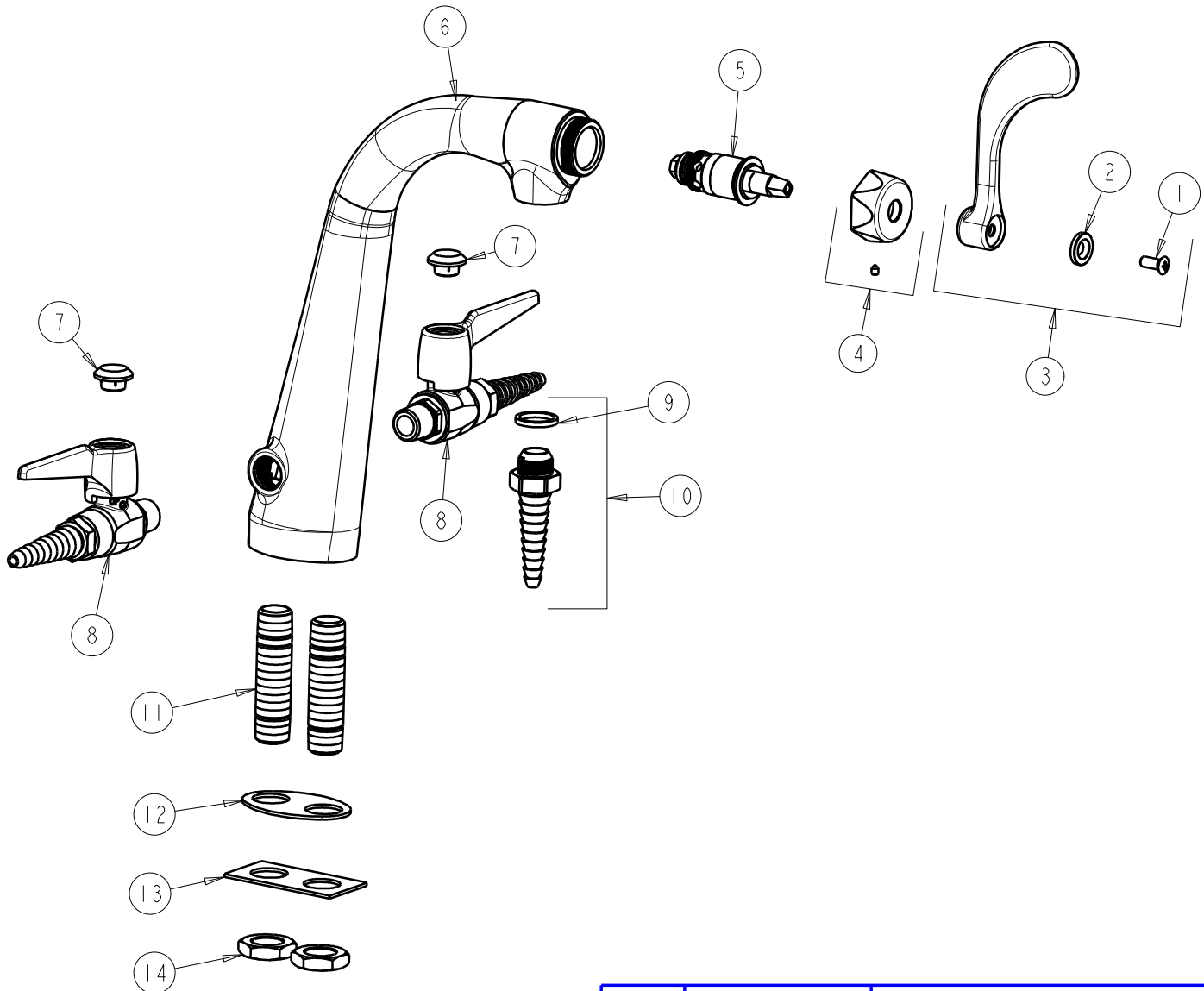
BY: JAR

DATE: 05-01-09

CHK: *JAR*

REV:

FOR TECHNICAL ASSISTANCE
1-800-TEC-TRUE (1-800-832-8783)



ITEM	PART NO.	DESCRIPTION
1	420-010JKRCF	SCREW, 10-32 UNC PH 1/2
2	633-123JKNF	INDEX BUTTON (BLUE)
3	317-COLDJKCP	WRISTBLADE HANDLE
4	444-105JKCP	VP CAP NUT WITH VR SCREW
5	1-100XTJKNF	QUATURN UNIT (LH)
6	—	VALVE BODY (NOT SOLD SEPARATELY)
7	216-328JKNF	BUTTON 'GAS'
8	909-CLESS216-28CP	BALL VALVE w/ CHECK VALVE
9	229-003JKNF	WASHER
10	E7JKCP	SERRATED HOSE NOZZLE
11	—	MALE SHANK 2-5/8 X 3/8
12	1332-003JKNF	GASKET
13	1332-002JKNF	PLATE
14	705-008JKRBF	NUT