

**CHICAGO FAUCETS**  


a Geberit company

2100 South Clearwater Drive  
 Des Plaines, IL 60018  
 Phone: 847-803-5000  
 Fax: 847-803-5454  
 www.chicagofaucets.com

**FOR TECHNICAL ASSISTANCE**  
 1-800-TEC-TRUE (1-800-832-8783)

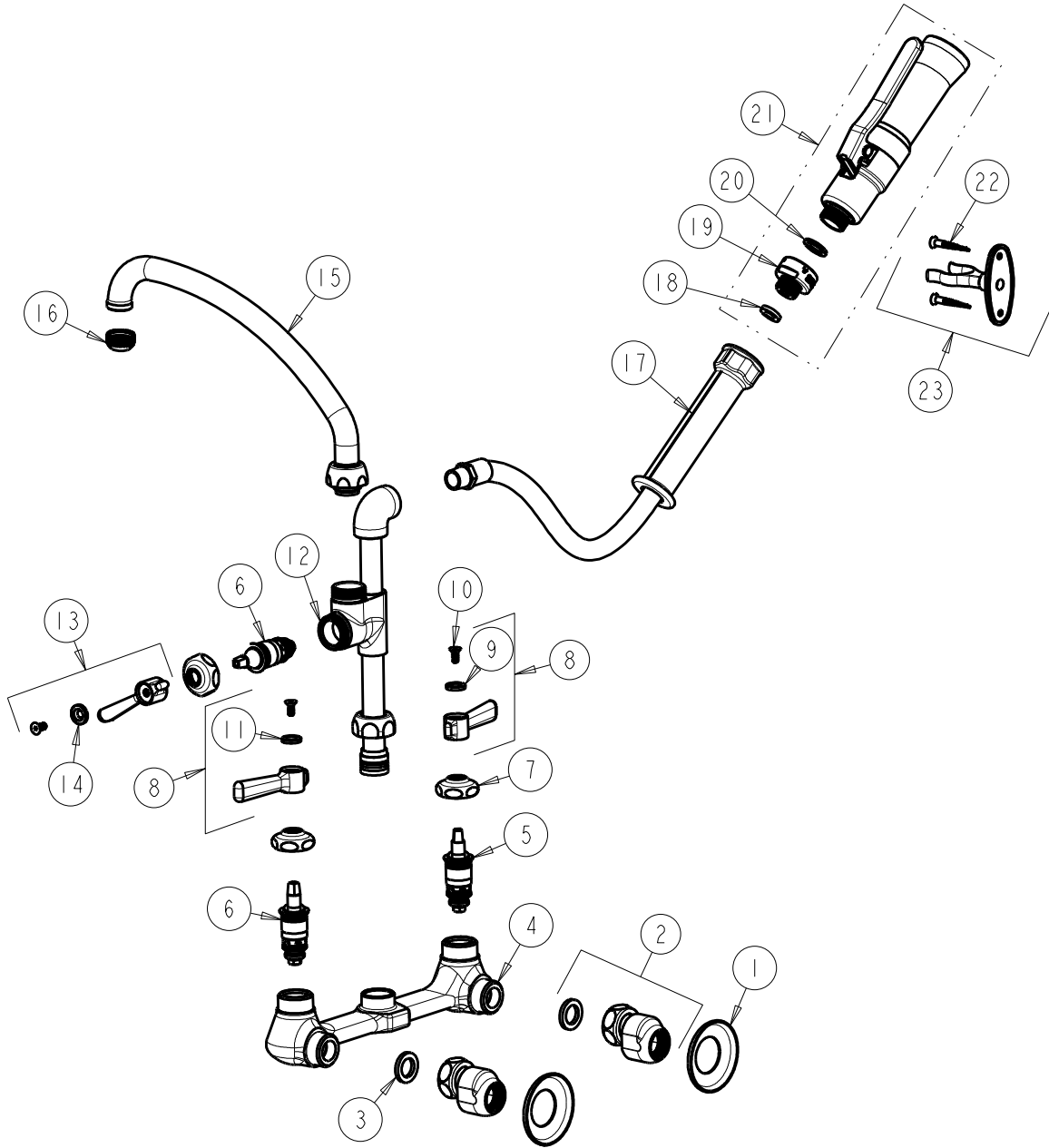
**REPAIR PARTS**

BY: JAR DATE: 03-27-15  
 CHK: *JAR* REV:

FITTING NO.  
**509-GCASABCP**

SUBMITTED MODEL NO.

ITEM NO.



ITEM	PART NO.	DESCRIPTION	ITEM	PART NO.	DESCRIPTION
1	1-055JKCP	FLANGE	13	369-PLJKCP	PLAIN LEVER HANDLE
2	GCJKABCP	ARM ASSEMBLY 'GC' WITH WASHER	14	633-223JKNF	INDEX BUTTON (WHITE)
3	1-011JKABNF	WASHER, .97 X .62 X .12	15	L9LEOJKAB	SPOUT, 9-1/2 C-C
4	----	VALVE BODY (NOT SOLD SEPARATELY)	16	E1JKABRCF	OUTLET, QUIXTOP
5	1-100XTJKABNF	QUATURN CARTRIDGE (LH)	17	83-58NF	HOSE & HANDLE 58"
6	1-099XTJKABNF	QUATURN CARTRIDGE (RH)	18	919-243JKABNF	GASKET, .685 X .375 X .125
7	1-214JKCP	CAP	19	919-046JKABRCF	ADAPTER, PRE-RINSE
8	369-PRJKCP	HANDLE, 2-3/8" LEVER (PAIR)	20	919-244JKABNF	GASKET, .825 X .590 X .072
9	633-023JKNF	INDEX BUTTON (RED)	21	99-ASAB	ADJUSTABLE SPRAY PRE-RINSE VALVE
10	420-020JKNF	SCREW, 1/8 FLAT HEX HEAD X 1/2	22	173-006JKCP	FLAT HEAD WOOD SCREW
11	633-123JKNF	INDEX BUTTON (BLUE)	23	853-CP	WALL HOOK ASSEMBLY
12	-----	VALVE BODY (NOT SOLD SEPARATELY)			