

CHICAGO FAUCETS
a Geberit company

2100 South Clearwater Drive
Des Plaines, IL 60018
Phone: 847-803-5000
Fax: 847-803-5454
www.chicagofaucets.com

REPAIR PARTS

FITTING NO.

778-VBCP

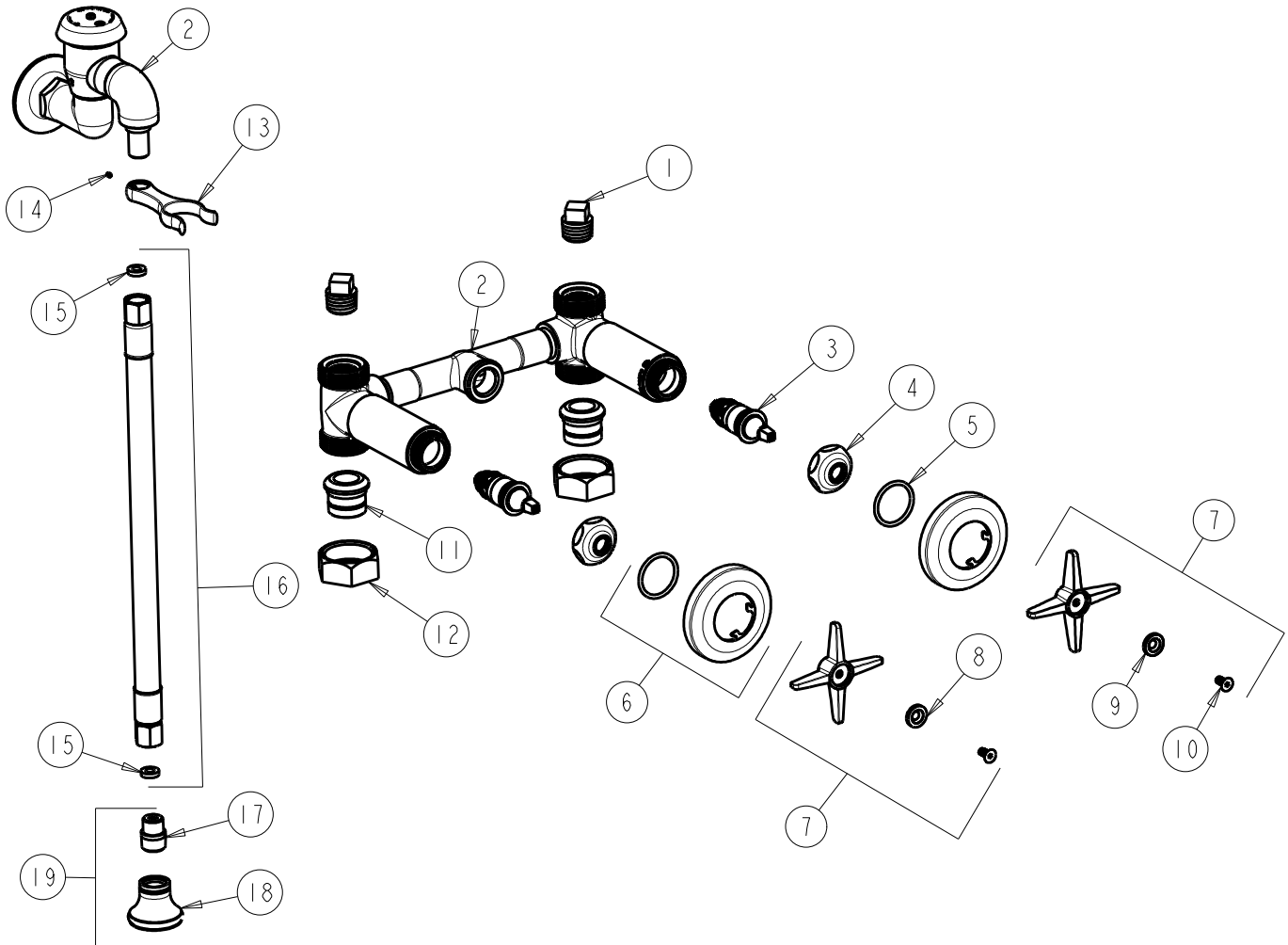
SUBMITTED MODEL NO.

ITEM NO.

BY: SID DATE: 10-09-02

CHK: *AK* REV: 12-01-16

FOR TECHNICAL ASSISTANCE
1-800-TEC-TRUE (1-800-832-8783)



ITEM	PART NO.	DESCRIPTION	ITEM	PART NO.	DESCRIPTION
1	234-032JKABRCF	1/2 NPT PLUG	11	177-003JKABRBF	UNION TAILPIECE
2	-----	VALVE BODY (NOT SOLD SEPARATELY)	12	177-002JKCP	UNION NUT
3	217-XTLHJKABNF	CARTRIDGE, SLO-COMPRESSION (LH)	13	-----	FORK (NOT SOLD SEPARATELY)
4	1-214JKCP	CAP	14	777-013JKNF	SCREW, SET 6-32 X 1/8
5	5235-107JKNF	O-RING	15	739-051JKABNF	GASKET, 1/2 X 1/4 X 1/8
6	633-201JKCP	FLANGE & O-RING	16	739-048KJKABNF	4' WHITE VINYL HOSE ASSEMBLY
7	633-PRJKCP	4-ARM HANDLE ASSEMBLY	17	777-011JKABRCF	ADAPTER
8	633-023JKNF	INDEX BUTTON (RED)	18	224-012KJKABCP	ROSE SPRAY OUTLET
9	633-123JKNF	INDEX BUTTON (BLUE)	19	E21JKABCP	ROSE SPRAY ASSEMBLY
10	420-020JKNF	SCREW, 1/8 FLAT HEX HEAD X 1/2			