

# PARTS LIST

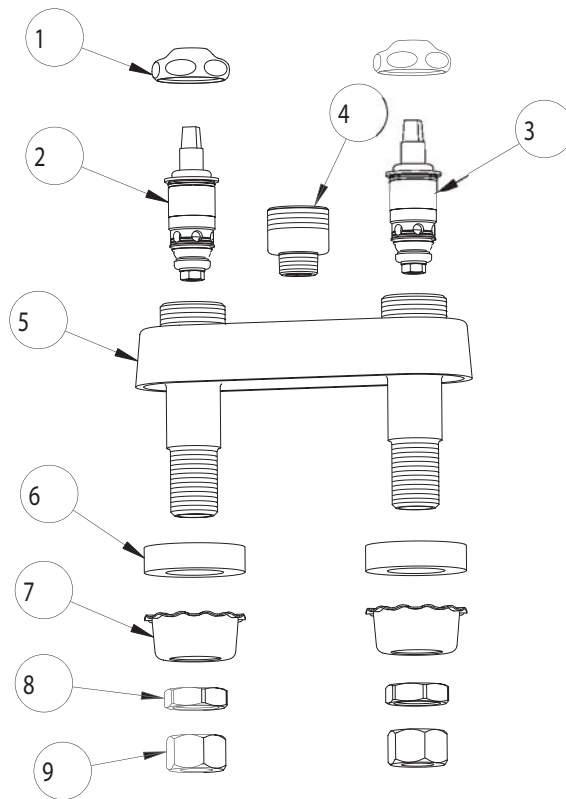
BY: JAR  
CHK'D:



FINISH:  
DATE:

AS SPECIFIED  
10-29-01

895-LESSSPTLESSHDL



ITEM NO.	PART NO.	DESCRIPTION
1	1-214	CAP
2	1-100XT	QUATURN UNIT (LH)
3	1-099XT	QUATURN UNIT (RH)
4	225-005	ADAPTER
5	-----	VALVE BODY (NOT SOLD SEPARATELY)
6	555-313	WASHER
7	1797-114	BASIN COCK WASHER
8	49-004	LOCKNUT
9	49-005	COUPLING NUT