

CHICAGO FAUCETS
a Geberit company

2100 South Clearwater Drive
Des Plaines, IL 60018
Phone: 847-803-5000
Fax: 847-803-5454
www.chicagofaucets.com

REPAIR PARTS

BY: JAR DATE: 03-02-10
CHK: REV: 05-17-11

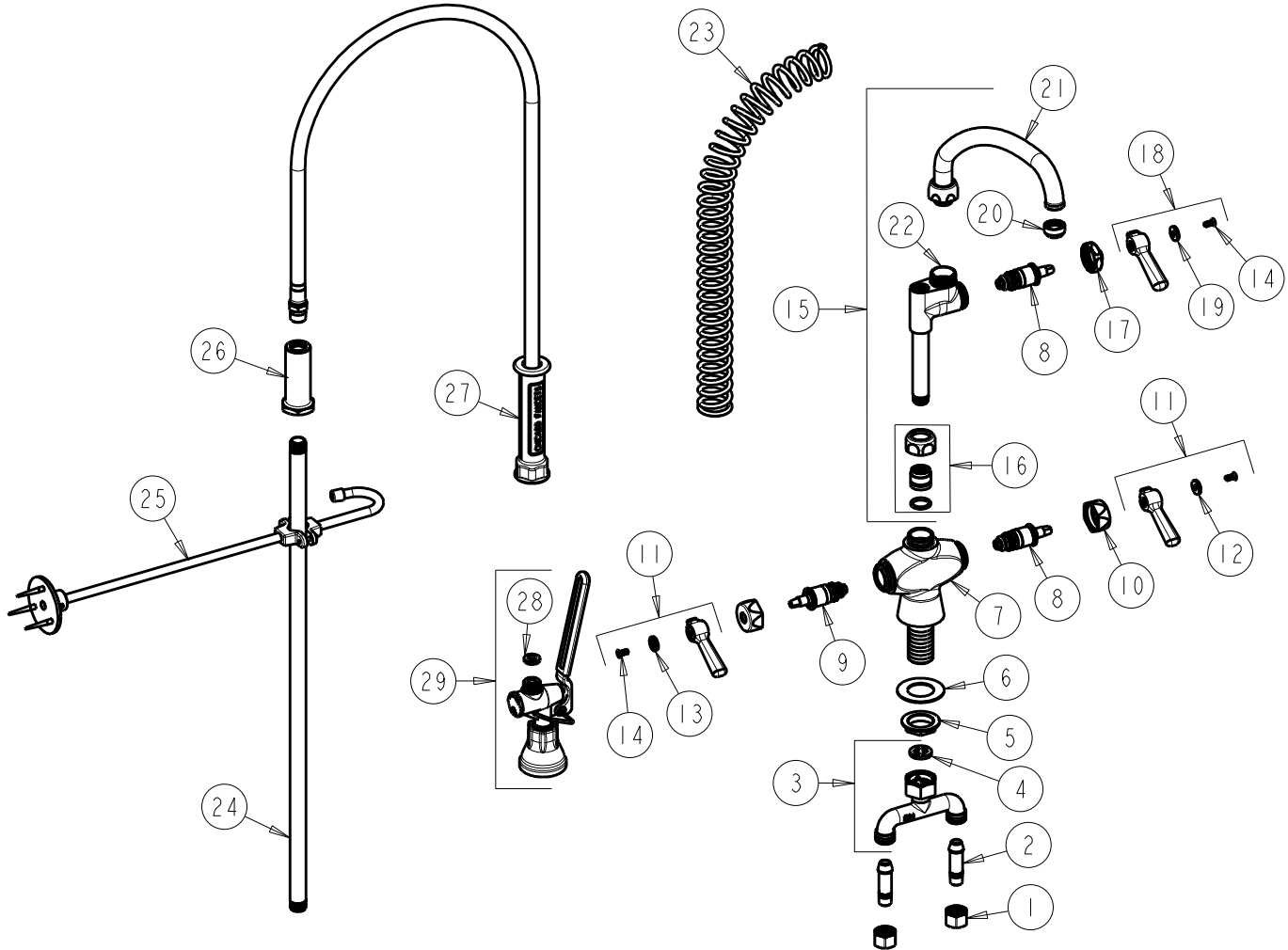
FITTING NO.

919-L613ACP

SUBMITTED MODEL NO.

ITEM NO.

FOR TECHNICAL ASSISTANCE
1-800-TEC-TRUE (1-800-832-8783)



ITEM	PART NO.	DESCRIPTION	ITEM	PART NO.	DESCRIPTION
1	49-005JKRBF	COUPLING NUT	16	143-PPJKNF	PRE-PACK
2	58-018KJKRBF	TAIL PIECE ASSEMBLY	17	1-214JKCP	CAP
3	50-010KJKRBF	CONNECTION ASSEMBLY	18	369-PLJKCP	PLAIN LEVER HANDLE
4	50-008JKNF	RUBBER WASHER	19	633-223JKNF	INDEX BUTTON (WHITE)
5	50-003JKRBF	LOCKNUT	20	E1JKRCF	QUIXTOP OUTLET
6	50-014JKNF	STEEL WASHER	21	L9LESSE3JKCP	FOR PARTS SEE L9LESSE3JKCP
7	---	VALVE BODY NOT SOLD SEPARATELY	22	---	VALVE BODY (NOT SOLD SEPARATELY)
8	1-099XTJKNF	QUATURN UNIT (RH)	23	919-014JKCP	SPRING
9	1-100XTJKNF	QUATURN UNIT (LH)	24	919-039JKCP	RISER 3/8" X 23"
10	444-005JKCP	CAP	25	902-MHJKCP	PIPE STRAP AND HOOK ASSEMBLY
11	369-PRJKCP	LEVER HANDLE ASSEMBLY (PAIR)	26	919-038JKCP	GUIDE SHANK
12	633-123JKNF	INDEX BUTTON (BLUE)	27	83-44NF	44" HOSE AND HANDLE ASSEMBLY
13	633-023JKNF	INDEX BUTTON (RED)	28	919-243JKNF	GASKET, .685 X .375 X .125
14	420-010JKRCF	SCREW, 10-32 UNC PH 1/2	29	90-LABCP	PRE-RINSE VALVE, LOW FLOW
15	613-ACP	PRE-RINSE ADAPTA FITTING			