

CHICAGO FAUCETS
a Geberit company

2100 South Clearwater Drive
Des Plaines, IL 60018
Phone: 847-803-5000
Fax: 847-803-5454
www.chicagofaucets.com

REPAIR PARTS

FITTING NO.

919-LCP

SUBMITTED MODEL NO.

ITEM NO.

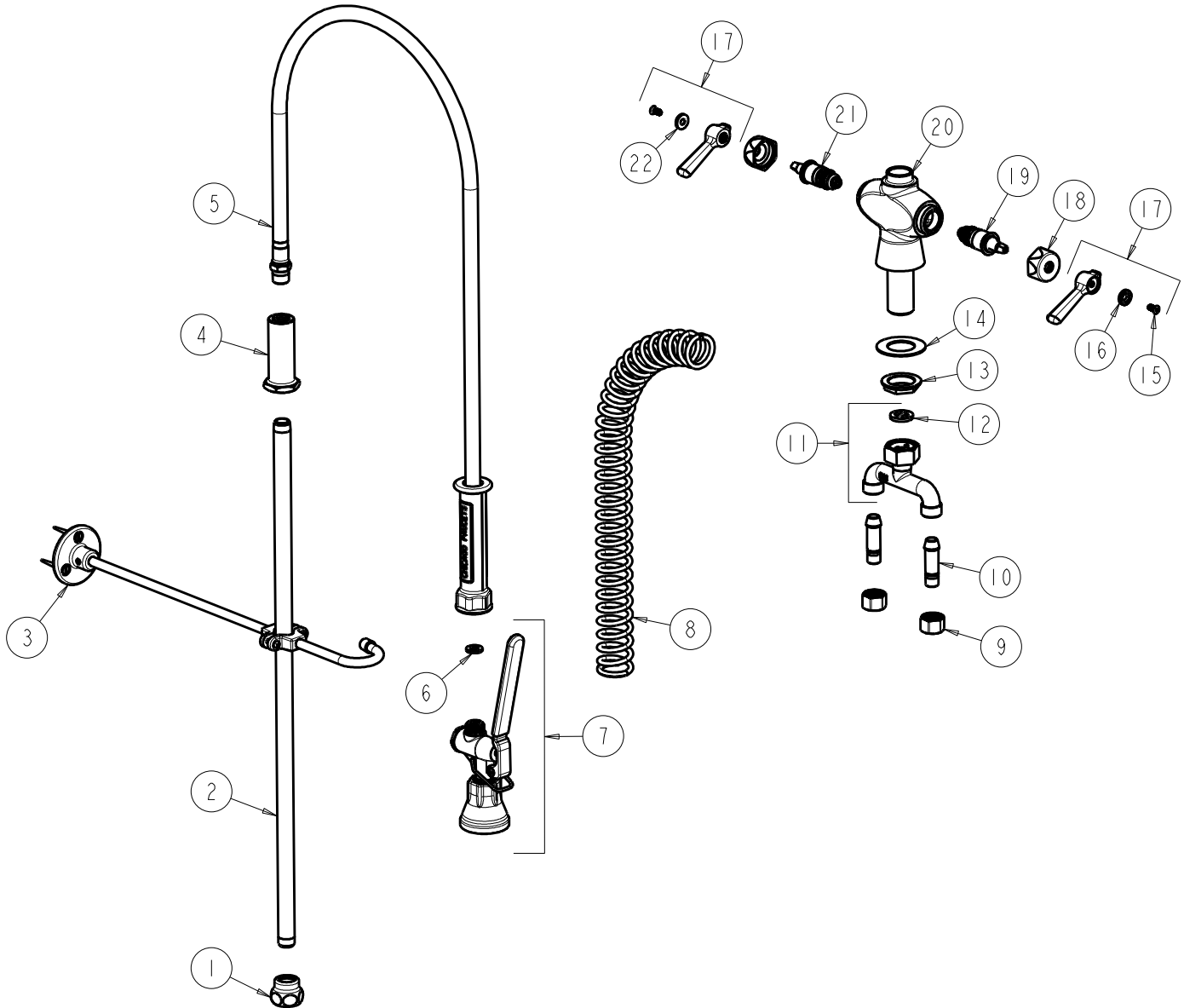
BY: JAR

DATE: 08-15-05

CHK: *[Signature]*

REV: 05-12-11

FOR TECHNICAL ASSISTANCE
1-800-TEC-TRUE (1-800-832-8783)



| ITEM | PART NO. | DESCRIPTION | ITEM | PART NO. | DESCRIPTION |
|------|-------------|----------------------------------|------|--------------|--------------------------------|
| 1 | BA2JKCP | ADAPTER 3/8 NPT X 1 1/16-18 UNEF | 12 | 50-008JKNF | RUBBER WASHER |
| 2 | 919-039JKCP | 3/8" NPT X 23" RISER | 13 | 50-003JKRBF | LOCKNUT |
| 3 | 902-MHJKCP | PIPE STRAP AND HOOK ASSEMBLY | 14 | 50-014JKNF | STEEL WASHER |
| 4 | 919-038JKCP | GUIDE SHANK | 15 | 420-010JKRCF | SCREW, 10-32 UNC PH 1/2 |
| 5 | 83-44NF | 44" HOSE AND HANDLE ASSEMBLY | 16 | 633-123JKNF | INDEX BUTTON (BLUE) |
| 6 | 919-243JKNF | GASKET, .67 X .35 X .09 | 17 | 369-PRJKCP | LEVER HANDLE ASSEMBLY (PAIR) |
| 7 | 90-LABCP | PRE-RINSE VALVE, LOW FLOW | 18 | 444-005JKCP | CAP |
| 8 | 919-014JKCP | SPRING | 19 | 1-099XTJKNF | QUATURN UNIT (RH) |
| 9 | 49-005JKRBF | COUPLING NUT | 20 | --- | VALVE BODY NOT SOLD SEPARATELY |
| 10 | 58-018JKRBF | TAIL PIECE ASSEMBLY | 21 | 1-100XTJKNF | QUATURN UNIT (LH) |
| 11 | 50-010JKRBF | CONNECTION ASSEMBLY | 22 | 633-023JKNF | INDEX BUTTON (RED) |